



# REU- THE PLASTICITY OF CELLS, ORGANISMS, AND COMMUNITIES

## June 2 - August 11, 2024

Use cutting edge tools and techniques to uncover the molecular and cellular mechanisms of how cells, organisms, and communities adapt to stochastic environmental conditions by coordinating growth with morphological, physiological, and behavioral traits to maximize fitness.

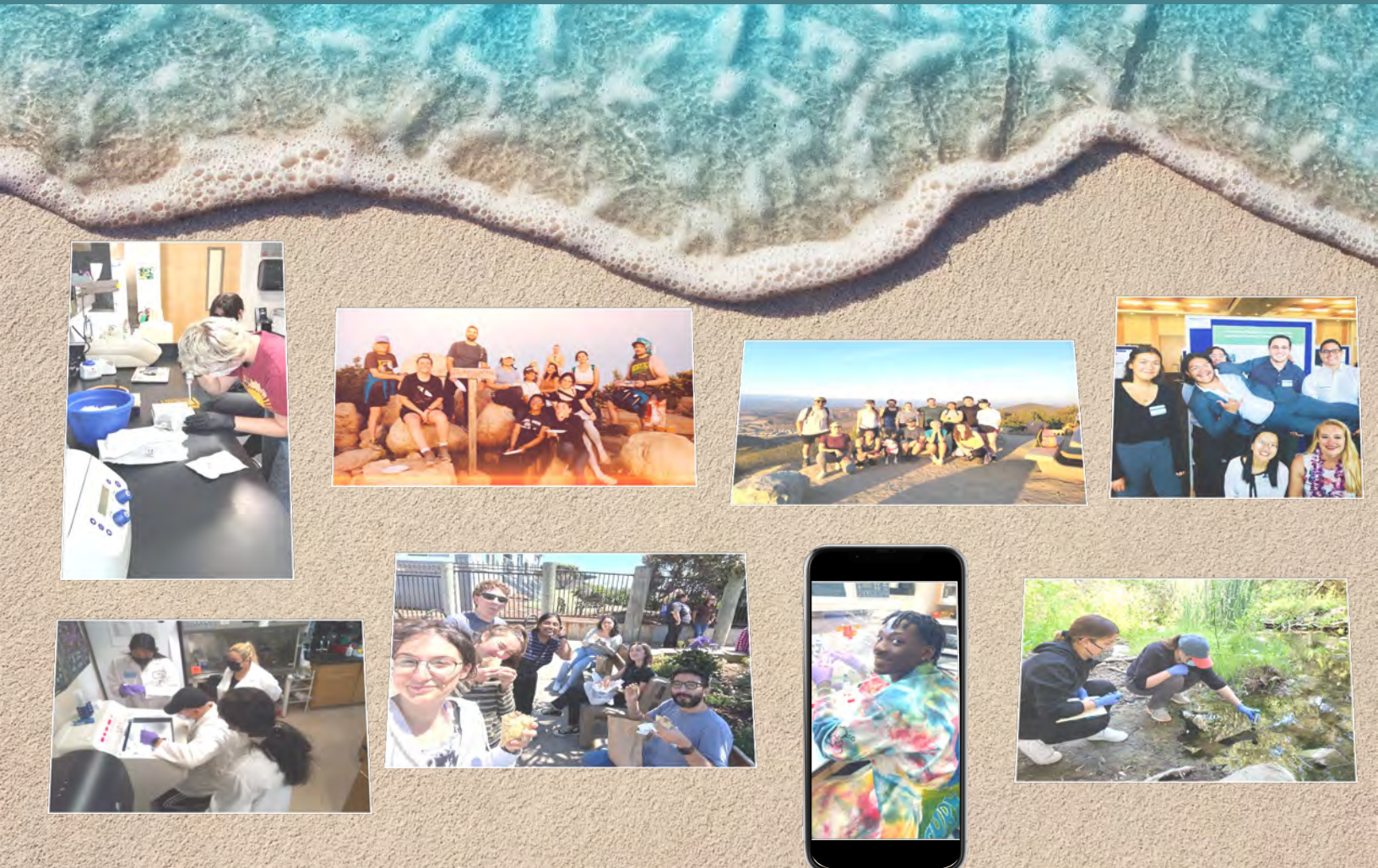
### Program Participants will Receive:

- \$6,000 Summer Stipend
- \$550 Travel Stipend for out of region participants
- Free Campus Housing
- Modest Per Diem

### Eligibility Requirements:

- US Citizen or Permanent Resident
- Major in Biological Sciences or Related Field
- College Transcripts
- 2 Letters of Recommendation

# Application Deadline: March 1, 2024



Dr. Betsy Read: [bread@csusm.edu](mailto:bread@csusm.edu)  
Dr. Carlos Luna : [clunalopez@csusm.edu](mailto:clunalopez@csusm.edu)

[www.csusm.edu/bioreu](http://www.csusm.edu/bioreu)