

[www.gotocsu.com](http://www.gotocsu.com)

# HOW TO GET TO COLLEGE

'iví 'axánninikmo 'omóm  
wukó"aan pilá'chilanga  
mukáanga





## 6-8<sup>TH</sup> GRADES

- Take **English and Algebra I** or another rigorous math course and aim for good grades.
- Take a **language other than English**.
- **Begin your student planner** on [www.csumentor.edu](http://www.csumentor.edu).



## 9<sup>TH</sup> GRADE Freshmen

- Take the “a-g” courses listed below to meet the CSU's admission requirements: Algebra I or Geometry, college prep English, and a foreign language.
- Aim for **As and Bs in all your classes**; focus on homework and develop good study skills.
- Take the **ACT EXPLORE exam**, a tool that helps you plan for high school and college.
- **Begin or update your high school course planner** on [www.csumentor.edu](http://www.csumentor.edu).

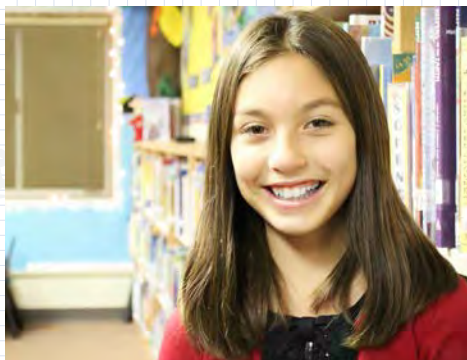


## 10<sup>TH</sup> GRADE Sophomores

- Take **Geometry or Algebra II**.
- Take **college prep English**.
- Take the **PLAN and PSAT exams** that help you prepare for the ACT and SAT and keep you on track for college.
- Take courses from the “a-g” course list: History, English, math, visual and performing arts, laboratory science, and a foreign language.
- **Update your high school course planner** on [www.csumentor.edu](http://www.csumentor.edu).

you can do it!





Húu'unilangay  
**6 - 8** LOWIYG LOWIYK

- **Kuşánniyam Mómyam Pomtéelay pí' Yáawaqati~Háalish Supúl**, mán wóoyish~húu'unilash hikáhkachi 'awóy, pí' 'omyáax 'ayánniyam híksunil póplovi.
- **Kuşánniyam téelat 'awóy Mómyam pomtéelangay wunáx.**
- **'angáayi loví"iyam pilá'chivuktum hamú'~pomwuşánnipiy 'ivá':** [www.csumentor.edu](http://www.csumentor.edu).



Húu'unilanga  
**9** LOWINGA

- **'ayánniyam húu'unilash "a-g" hóowaanti póplonga hayá"ikutum PM'I pomíilaxchaqwilaqati pilá'chivuktum 'angáayi pomşuláaqaxpi.** Yáawaqati~Háalish 1 mán 'éexil~Churó"ish, Mómyam pomtéelay pilá'chilayk~mukáyk~hatí"axkutum pomkwáan, pí' téelat wáamkawichi.
- **'omyáax 'ayánniyam A pí' B chóo'onnga 'omhúu'unilanga;** şiiwiyam 'omşúuni kíingawinga pí' warákkiyam 'apilá'chaxşunil póplovi nóolnolish pokwáan.
- **Kuşánniyam tú"ish potúng ACT EXPLORE (LOVÍ"IWUNTUM HITHÉKKIYAM),** 'owó"ilash 'omóomi máamayuqati hamú'~'omwuşánnipiy pilá'chilash 'éshkawish pí' pilá'chilash mukát pokwáan.
- **'angáayi loví"iyam hamú'~'omwuşánnipiy pilá'chilash 'éshkawish pokwáan 'ivá':** [www.csumentor.edu](http://www.csumentor.edu).



Húu'unilanga  
**10** LOWINGA 'APÁLLAXUM

- **Kuşánniyam 'éexil~Churó"ish mán Yáawaqati~Háalish 2**
- **Kuşánniyam Mómyam Pomtéelay pilá'chilayk~mukáyk~hatí'- 'axkutum pomkwáan.**
- **Kuşánniyam tú"ish PLAN pí' PSAT 'omóomi hayámmiqati tú"ish ACT pí' SAT pokwáan pí' 'omóomi 'áyqati péenga pilá'chilayk mukáyk.**
- **'ayánniyam húu'unilash hóowaanangay potúng "a-g":** 'anóllaxi, Mómyam pomtéelay, wóoyish, 'éskanaxish tíiwaanti pí' 'awóm~pómkila~wuşáannaanti, 'ayállish 'ayál'owo'ilanga, pí' téelat wáamkawichi.
- **Pitóokawichuniyam hamú'~'omwuşánnipiy pilá'chilash 'éshkawish pokwáan 'ivá':** [www.csumentor.edu](http://www.csumentor.edu).



**Ponéy  
'omloví"ivotawun**



## 11<sup>TH</sup> Juniors GRADE

- **Take advanced math and college prep English:** Algebra II or advanced math and English (writing and critical reading).
- **Review the “a-g” classes** you still need to take for CSU admission with your counselor.
- **Update your high school course planner** on [www.csumentor.edu](http://www.csumentor.edu).
- **Take the EAP exam** to find out if you are ready for college-level math and English courses. Visit [www.csusuccess.org](http://www.csusuccess.org).
- **Register for the AP exams in the spring.** You can earn college credit if you score well on the test(s) and will be exempt from taking the EPT and ELM.
- **Register for the PSAT** if you didn't take it in 10th grade.
- **Register for the SAT or the ACT at least one month before the exam.** Many CSU campuses require you to take the exam by October of your senior year.



## 12<sup>TH</sup> Seniors GRADE

- **Complete all final “a-g” course requirements**, including advanced math and college prep English. Trigonometry or Analytic Geometry/Calculus are also recommended.
- **If your EAP test results indicate that you are “Ready-Conditional” for college-level mathematics**, you are required to take a 12th grade math course with a prerequisite of Algebra II and earn a grade of “C” or better to maintain your exemption.
- **If you are planning on transferring** from a California Community College, please visit the CSU's website for transfer pathways: [www.calstate.edu/transfer/roadmaps](http://www.calstate.edu/transfer/roadmaps).
- **If your EAP test results indicate that you are “Not Yet Ready for college-level math or English courses,”** visit [www.collegeeap.org](http://www.collegeeap.org) to practice your math or English skills. This may increase your chances of passing the CSU's placement tests.

### EARLY SEPTEMBER:

Register for the October SAT or ACT.

### OCTOBER 1- NOVEMBER 30:

**Apply to the CSU early**—the deadline is November 30!  
**Begin to apply for scholarships.**

### JANUARY- MARCH:

**Apply for financial aid by March 2** ([www.fafsa.ed.gov](http://www.fafsa.ed.gov)).

### MARCH-MAY:

Prior to enrolling, register for the CSU's ELM and EPT exams (unless you are exempt).

### LATE SPRING:

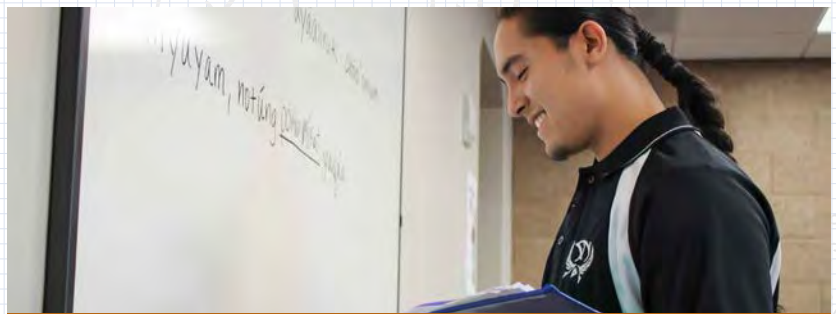
Students taking AP classes should register for the AP exams.



# 11

Húu'unilanga  
**LOWINGA ŞÓO'WUNTUM**

- **'ayánniyam wóoyish pómkilayk~pulú'chaanti pí' Mómyam pomtéelay pilá'chilayk~hati"axkutum pomkwáan:** Yáawaqati~Háalish II mán wóoyish pómkilayk~pulú'chaanti pí' Mómyam pomtéelay (náawish pí' nóolish ngináaywunti).
- **'omóomi~péepuxunikat po'éesh, yú'pan~tíwiyam húu'unilash "a-g" pitóowili 'om'ayánniyay şuláaqaxkutum PM'lyk.**
- **Pitóokawichuniyam hamú'~'omwuşánniyay pilá'chilash 'éshkawish pokwáan 'ivá':**  
[www.csumentor.edu](http://www.csumentor.edu).
- **Kuşánniyam tú"ish EAP** 'ayállikutum téé hamú' hayámmaantum 'om-míyqalay húu'unilash pilá'chilash~mukáangawish pokwáan Mómyam pomtéelangax pí' Wóoyinga.  
Néechiyam [www.csusuccess.org](http://www.csusuccess.org).
- **'aşúnnga~náawiyam 'omtáax tú"ish AP pokwáan táşpa.** 'omóm 'omchíwwivotawun hík supúlşunil pilá'chilash~mukáangawichi, híksunil polóovi loví"linik (híknga) tú"inga, pí'mo qáy 'omkuşánnipi míyq EPT pí' ELM.
- **'aşúnnga~náawiyam 'omtáax tú"ish PSAT pokwáan,** qáy pitóowili kuşánniyay Húu'unilanga Potáppaanalowinga.
- **'aşúnnga~náawiyam 'omtáax tú"ish SAT mán ACT** pokwáan wéhmaingay supúl móoyil tú"ish pómkila. Múyyuk pilá'chilash mukát PM'i míilaxchaqwilaq ponéy 'omkuşánniyay Móynga Potáppaanalowinga, mán hamú', 'omtáwpakinga púshluwunanga.



# 12

Púshluwuntum Húu'unilanga  
**LOWINGA**

- **Háylovi'iyam chóo'on hísh húu'unilash "a-g" pomíilaxchaqwilaqati** 'aşúnnga~náakkaanti Wóoyish pómkilayk~pulú'chaanti pí' Mómyam pomtéelay pilá'chilayk~mukáyk~hati"axkutum pomkwáan. 'íyqup mulú"ináat Páahaykun~Matámtash~Churó"ish, 'éexil~Churó"ish Huyáqqiwut/Tóomal~Wóoyish.
- **'omhíksun tú"inga EAP pohuní"iqala 'omóm qáy pitóowili hayámmaantum 'om-míyqalay wóoyish pilá'chilash~mukáangawish pokwáan,** wuná' 'omkuşánnipi míyq húu'unilash wóoyichi 'omtáwpakinga potáppaanalowinga wéhnga pa'áq. 'iví' húu'unilash ponónmipi míyq Yáawaqati~Háalish II, pí' 'omkuşánnipi míyq wéhmaingay C, mán híksunil máas 'éshkawichi, 'omóm qáy húu'unilash wóoyichi 'awóy 'omkuşánnivichuqala.
- **Chapállaxvichuqanik** pilá'chilangay mukáangay qállilangawingay Kalifóorniyangay, néymax néechiyam PM'i po'áawlay wíiwisanga, chapálpet tolóowikutum:  
[www.calstate.edu/transfer/roadmaps](http://www.calstate.edu/transfer/roadmaps)
- **'omhíksun tú"inga EAP pohuní"iqala 'omóm "qáy pitóowili hayámmaantum 'om-míyqalay húu'unilash pilá'chilash~mukáangawish pokwáan Mómyam pomtéelangax pí' Wóoyinga",** néechiyam [www.collegeeap.org](http://www.collegeeap.org) pilachpilá'chikutum 'om'apilá'chaxşuni wóoyinga pí' Mómyam pomtéelangax. 'iví' téé 'omóomi máamayun húyyiwuntum 'om-muyáqqaxpiy tavántu'ingay PM'i~ngawingay.

**Hamúu Móynga** 'aşúnnga~náawiyam 'omtáax SAT mán ACT  
**Nomaawasá"ilowinga:** pokwáan 'óovaxlut Móynga Potáppaanalowinga.

**Móyngay Potáppaanalowingay 1 – Móyyuk Potáppaanalowiyyik Supúlyuk pa'áq 30:** pí'mukmatamtachup Móyla Potáppaanalowi Supúl Pa'áq 30! 'angáayi 'omyáax 'ayánniyam pilá'chikaşunil.

**Móyngay Hamúulawingay Móyyuk Popáahaylowiyyik:** 'omyáax kuşánniyam máamayush sínnavangawichi Móyla Popáahaylowi 2 pómkila ([www.fafsa.ed.gov](http://www.fafsa.ed.gov)).

**Móyngay Popáahaylowingay Móyyuk Pomháarilowiyyik:** Qáy pitóowili húu'unilanga 'omtáax 'aşúnnga~náawinik, 'aşúnnga~náawiyam 'omtáax tú"ish ELM pí' EPT P.M.'i~ngawish pokwáan (téé 'omóm 'iví' tú"ish 'omkuşánnipi pomiyqala).

**Yámmunik Táşpa:** Pilá'chivuktum 'ayánniwuntum húu'unilash AP pomtéax 'aşúnnga~pomnáawipi míyq tú"ish AP pokwáan.



## How to **PAY FOR COLLEGE**

- See if you qualify for financial aid: [www.fafsa.ed.gov](http://www.fafsa.ed.gov)
- You may also be eligible for a Cal Grant: [www.calgrants.org](http://www.calgrants.org)
- Check out the many scholarship opportunities: [www.scholarships.com](http://www.scholarships.com)
- Learn how to save for college: [www.scholarshare.com](http://www.scholarshare.com)

## **"a-g"** 9th-12th Grades **COURSES**

The California State University requires the following college preparatory pattern of classes (referred to as the "a-g" courses) for admission:

- a HISTORY AND SOCIAL SCIENCE**  
2 years (1 year of U.S. History and 1 year of Social Science)
- b ENGLISH**  
4 years required
- c MATH**  
3 years (4 years recommended)
- d LABORATORY SCIENCE**  
2 years with a lab class
- e LANGUAGE OTHER THAN ENGLISH**  
(Foreign Language) 2 years of the same language
- f VISUAL AND PERFORMING ARTS**  
1 year
- g COLLEGE PREPARATORY ELECTIVES**  
1 year of any college preparatory subject

Visit your school counselor for a detailed list of classes or visit [www.gotocsu.com](http://www.gotocsu.com).

### **ABBREVIATIONS**

**ACT** (American College Testing)

**AP** (Advanced Placement)

**CSU** (California State University)

**EAP Exam** (Early Assessment Program Exam)

**ELM** (Entry Level Math)

**EPT** (English Placement Test)

**PSAT** (Preliminary Scholastic Assessment Test)

**SAT** (Scholastic Assessment Test)



## Michá' 'axánninik 'OMNÉ'CHIVOTAWUN PILÁ'CHILASH MUKÁT POKWÁAN

- Tíiwiyam téé 'omkuşánnivotaqalay máamayush sínnavamawichi:  
[www.fafsa.ed.gov](http://www.fafsa.ed.gov)
- Téé 'omkuşánnivotawun sínnaval Cal Grantgay:  
[www.calgrants.org](http://www.calgrants.org)
- Hithékkiam pét 'awá'woy pilá'chikaşunil 'om'ayánnipiy:  
[www.scholarships.com](http://www.scholarships.com)
- Pilá'chiyam 'om'ókkipiy sínnaval pilá'chilash mukát pokwáan:  
[www.scholarshare.com](http://www.scholarshare.com)

## HÚU'UNILASH

**"a-g"** Húu'unilangay  
9lowingay 12lowiyk

Pilá'chilash Mukát 'iváywish mílaxchaqwilaq húu'unilash nónmíqati pilá'chilayk~mukáyk~hatí"axkutum pomkwáan (potúng yaqáa húu'unilash "a-g") 'omşuláaqaxvotaqalpi:

- a 'ANÓLLAXI PÍ' PÉEWLUŞUNIL~'AYÁLLISH**  
2 táwpash (1 táwpash 'anóllaxngay Toşngulangay Yúnyunàanangay pí' 1 táwpash Péewluşunil~'ayállingay)
- b MÓMYAM POMTÉELAY 4 TÁWPASH**
- c WÓOYISH 3 TÁWPASH (4 TÁWPASH MULÚ"INÀAT)**
- d 'AYÁLLISH 'AYÁL'OWO'ILANGA** pokwáan 2 táwpash húu'unilatal 'ayál'owo'ilatal
- e TÉELAT, PÍ' QÁY MÓMYAM POMTÉELA** (Téelat Wáamkawish) 2 táwpash páy'wingay téelangay
- f HÚU'UNILASH PILÁ'CHILAYK~MUKÁYK~HATÍ"AXKUTUM POMKWÁAN**
- g 'OCHIKWÁYYIVOTAQAT** 1 táwpash micháy húu'unilangay mímchapan pilá'chilayk~mukáyk~hatí"axkutum pomkwáan

Néechiyam 'omóomi~péepuxunikati 'ompilá'chilanga hóowaat pokwáan húu'unilangay, mán néechiyam [www.gotocsu.com](http://www.gotocsu.com).

## QAPÚTTAAT

<b>ACT</b>	(American College Testing - Tú"ish pilá'chilash~mukáangawish 'amerikáangawish)	<b>ELM</b>	(Entry Level Math -Wóoyish Purúylangay Hamúlawingay)
<b>AP</b>	(Advanced Placement - 'axíimi~wuşánnish 'awóm pómkila)	<b>EPT</b>	(English Placement Test - Mómyam~Pomtéelay~Tú"ish Tíiwilut Michá' 'omqálqalay Pilá'chilanga)
<b>CSU</b>	(California State University-PM'i Pilá'chilash Mukát 'iváywish)	<b>PSAT</b>	(Preliminary Scholastic Assessment Test - Tú"ish Qáy~Poháylowi Tíiwilut Michá' 'omqálqalay Pilá'chilanga)
<b>EAP</b>	(Early Assessment Program Exam - (Pilá'chivuktumi~Tú"ish Hamúu)	<b>SAT</b>	(Scholastic Assessment Test - Tú"ish Tíiwilut Michá' 'omqálqalay Pilá'chilanga)

# HOW TO GET TO COLLEGE

'iví' 'axánninikmo 'omóm wukó"aan  
pilá'chilanga mukáanga

Wáachaq 23 pilá'chilash  
mómkat PM'i~ngawish.  
Michát şum 'omóm chikwáyyivichuwun?

The **CSU** has  
**23**  
CAMPUSES  
to choose  
from!

