



Mission Park Community Survey Escondido, California

Survey Report prepared by

**National Latino Research Center
California State University, San Marcos**

June 2006



Report Authors

**Arcela Núñez-Álvarez, Ph.D.
Carolyn Kitzmann, M.A.
Ana M. Ardón, B.A.**

The Mission Park Community Survey Project is the result of a partnership between the City of Escondido, California, the Escondido Public Library, the National Latino Research Center at Cal State San Marcos, and residents of the Mission Park neighborhood. The project aims to assess the needs, concerns, priorities and perceptions of residents in Mission Park.



ACKNOWLEDGMENTS

This survey was developed for the Mission Park Community project in Escondido, California, a project to assess needs/challenges and to identify strengths/opportunities for change and civic engagement. Numerous individuals and organizations provided invaluable expertise and input during the development of the survey and the preparation of the report. In particular, we would like to thank and acknowledge the following:

The City of Escondido: Jamie Kasvikis, City of Escondido Management Analyst, and Jerry Van Leeuwen, City of Escondido Director of Housing Neighborhood Services, provided valuable support during the entire assessment process.

Escondido Public Library: Loretta McKinney, former Deputy City Librarian, helped develop the survey's Community Resources & Social Networks section and provided ongoing project consultation.

Mission Park Community Advisory Team: The Mission Park Community Advisory team formed in June 2004 to guide the development and implementation of improvement activities in Mission Park. Members include:

- Esther Resendiz, Mission Park resident & Park Place Neighborhood Group.
- Anita Herrera, Mission Park resident & Park Place Neighborhood Group.
- Benny Herrera, Mission Park resident & Park Place Neighborhood Group.
- Carmen Amigón, CommunityHousing Works, Leadership Development Manager.
- Lucy Cardona, resident and student at Grant Middle School.
- Jessie Espinoza, resident and student at Grant Middle School.
- Alfonso Nava García, Mission Park resident (Cobblestone Village).
- Rosario Salazar, Farr Elementary School (TOPS - Technician of Parent for Schools).
- Linda Woods, board member of the Escondido Unified School District.

National Latino Research Center Staff: The authors would like to thank the NLRC staff for overall support on this project and specific contributions:

Database & Data Entry: Carolyn Kitzmann created the database and supervised data entry. Carolyn Kitzmann, Griselda Cervantes, and Ana Ardón completed data entry.

Data Collection: Arcela Núñez-Álvarez and Ana Ardón supervised data collection.

Data Analysis: Carolyn Kitzmann and Ana Ardón completed data analysis.

Report Preparation: Arcela Núñez-Álvarez, Carolyn Kitzmann and Ana Ardón prepared the final report.

Reviewers: Dr. Gerardo M. González and Paul Hernandez served as research consultants and reviewers.

Special thanks to Sonia Taddy, former NLRC Associate Director, for initiating this project and for her overall vision, support and contributions.



Cal State San Marcos Students: The authors thank the following CSUSM students for collecting door-to-door surveys in Mission Park:

CSUSM Volunteers: Isaiah Nevarez, Agustin Zavala, Fredi García, Juan Luna, Ivonne Sánchez, Heather Rolfe, Pedro Sandoval, Didi Lund, Nancy Martínez-Molano, and Carmelino Cruz volunteered their time to collect surveys.

CSUSM/NLRC Interns: Chris Wall and Omar Yáñez, NLRC interns during Fall semester 2005, collected data in Mission Park.

Cal State San Marcos Faculty: Dr. Kim Knowles-Yáñez and Dr. Jorge Riquelme provided valuable support during preliminary data collection phase at the initial Neighbor-to-Neighbor dinners.

Community Housing Works: Carmen Amigón arranged for NLRC to conduct a focus group with residents from the City of Escondido.

Funding: The City of Escondido, the Escondido Public Library, Albertson's, Inc. Southern California Region, and The Welk Foundation funded this project.



TABLE OF CONTENTS

ACKNOWLEDGMENTS..... 2

TABLE OF CONTENTS 4

LIST OF FIGURES AND TABLES..... 5

INTRODUCTION..... 7

DEMOGRAPHICS OF THE MISSION PARK COMMUNITY 8

BACKGROUND TO MISSION PARK COMMUNITY SURVEY..... 22

MISSION PARK COMMUNITY SURVEY 27

SURVEY PARTICIPANT DEMOGRAPHICS..... 29

YOUTH ISSUES & ACTIVITIES 32

COMMUNITY RESOURCES & SOCIAL NETWORKS 38

EMPLOYMENT & ECONOMIC DEVELOPMENT 47

HOUSING & NEIGHBORHOOD SAFETY 52

SUMMARY OF FINDINGS & RECOMMENDATIONS 60

LIST OF ATTACHMENTS 65

CITY OF ESCONDIDO SUMMARY OF SERVICES..... 66

REFERENCES & RESOURCES 72



LIST OF FIGURES AND TABLES

Figure 1. Map of San Diego County 8

Figure 2. Map of Mission Park Census Tracts (City of Escondido) 12

Figure 3. Mission Park Population by Ethnicity (2000 U.S. Census) 13

Figure 4. Educational Attainment of Mission Park Residents (2000 U.S. Census) 15

Figure 5. Household Language of Mission Park Residents (U.S. Census 2000) 16

Figure 6. Average Household Size of Residents (U.S. Census 2000) 17

Figure 7. Owner-Occupied Housing Units in Mission Park..... 17

Figure 8. Monthly Crime Index for Mission Park, July 2003-June 2005..... 19

Figure 9. Total Monthly Property Crime in Mission Park, July 2003-June 2005 20

Figure 10. Total Monthly Violent Crime in Mission Park, July 2003-June 2005 20

Figure 11. Neighbor-to-Neighbor Dinner, June 2004 22

Figure 12. Neighbor-to-Neighbor Dinner, June 2004 23

Figure 13. Mission Park Area 1 27

Figure 14. Mission Park Area 2 27

Figure 15. Mission Park Area 3 27

Figure 16. Mission Park Area 4 27

Figure 17. Ethnicity of Mission Park Residents (by area)..... 29

Figure 18. Country of Birth (by area) 29

Figure 19. In what language do you usually communicate? 30

Figure 20. In what language do you read most? 31

Figure 21. Do you own or rent? By area 31

Figure 22. How would you describe your community as a safe place to raise a family? 32

Figure 23. Respondents who agree that children have a safe place to play in their neighborhood 33

Figure 24. Availability of recreational facilities and programs for youth 34

Figure 25. Respondents who agree that their children have enough activities after school..... 35

Figure 26. How would you rate the quality of education of your child? 36

Figure 27. Respondents who had someone to turn to for help 38

Figure 28. How connected do you feel to your community? 39

Figure 29. With whom/what are you connected? 40

Figure 30. Use of Escondido Public Library by Family Monthly Income 40

Figure 31. "Which branch of the library do you use?" 41

Figure 32. "Which newspapers do you read?" 41

Figure 33. "Do you feel that Escondido city government is responsive to the needs of your neighborhood?" 42

Figure 34. "Why couldn't you receive healthcare?" 43

Figure 35. "How would you rate the ease with which you are able to get social services?" 44

Figure 36. "How would you rate the ease with which you are able to get social services?" 44



Figure 37. "How would you rate the ease with which you are able to get social services?" by language	45
Figure 38. "What do you think would improve access to social services?"	45
Figure 39. Respondents receiving government assistance by language	46
Figure 40. Knowledge of Eligibility of Government Assistance by Language	47
Figure 41. Personal or family financial situation	48
Figure 42. Going without basic needs?	49
Figure 43. "Do you or anyone in your family have a bank account?"	49
Figure 44. Portion of income going to housing costs	52
Figure 45. Portion of income that goes to housing costs	52
Figure 46. Effects of Cost of Housing.....	53
Figure 47. Respondents who have considered moving out of the area by language	53
Figure 48. Respondents' Perceptions of Housing Conditions in Mission Park.....	54
Figure 49. How safe do you feel in your neighborhood?	55
Figure 50. How safe do you feel in your neighborhood? by area.....	55
Figure 51. Respondents Concern About Crime	56
Figure 52. How concerned are you about crime?.....	56
Figure 53. Crime getting better or worse?	57
Figure 54: Crime getting better or worse?	57
Figure 55. What crimes concern you?	58
Figure 56. How effective is law enforcement in your community?	59
Figure 57. How effective is law enforcement in your community?	59
Table 1. Highlight of Quality of Life Indicators of Mission Park.....	14
Table 2. Socio-Economic Indicators of Mission Park Residents	15
Table 3. Strengths and/or Opportunities in Mission Park.....	24
Table 4. Barriers and/or Needs in Mission Park	25



INTRODUCTION

Beginning in the spring of 2003, the National Latino Research Center (NLRC) and an interdisciplinary team of faculty, staff, community agencies, and Mission Park neighborhood residents initiated a dialogue to address coordination of community resources, leadership, civic engagement, and economic development in the City of Escondido, California (North San Diego County). This exchange consisted of numerous meetings throughout 2003 to 2005 to assess and prioritize community needs and suggest opportunities to strengthen power within local communities.

The interdisciplinary team selected the Mission Park neighborhood as an appropriate site for a community needs assessment based on the extent of needs and potential to benefit from coordinated city-university-community collaboration. As a means to move forward this process the Mission Park Collaborative was formalized in 2004.

In partnership with the City of Escondido, the Escondido Public Library, and the Mission Park Community Advisory Group, the NLRC developed a community survey to assess the needs, concerns, priorities and perceptions of residents in Mission Park. Specifically, the community survey focused on four key areas: Youth Issues and Education, Community Resources and Social Networks, Employment and Economic Development, and Housing and Neighborhood Safety.

This report does the following:

- 1) Documents the formation of the Mission Park collaborative;
- 2) Presents the preliminary findings of the Mission Park Community Needs Assessment and;
- 3) Offers recommendations to help guide program development and allocation of local resources in the Mission Park community

This study aims to capture community residents' issues and concerns through engagement in participatory-action research to help guide the city's future planning strategies and resource allocation.

For additional information about the survey and report, please contact Dr. Arcela Nuñez-Alvarez at the Cal State San Marcos National Latino Research Center (NLRC) at 760.750.3500 or email nlrc@csusm.edu.



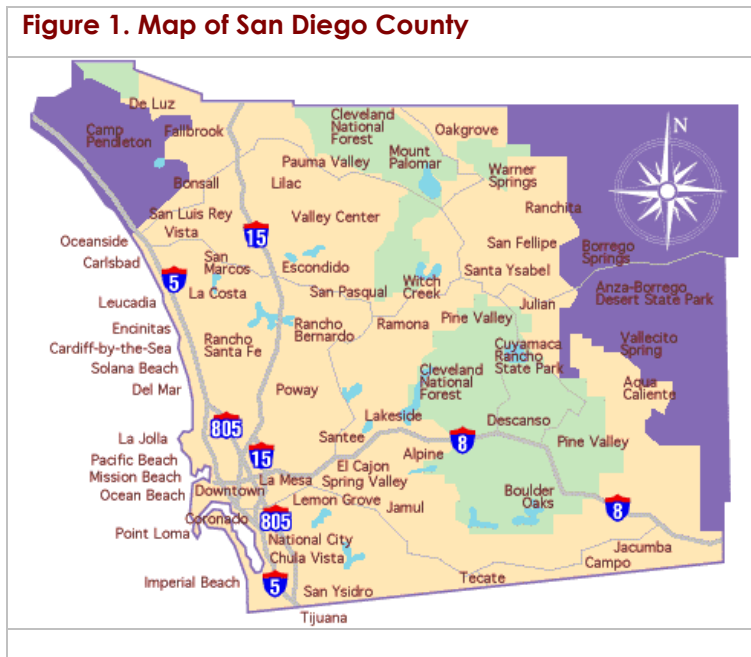
DEMOGRAPHICS OF THE MISSION PARK COMMUNITY

To better understand the needs and characteristics of Escondido's Mission Park area, this report provides a brief overview of demographics at the county, city, and neighborhood levels. This demographic section is followed by an overview of survey participants' demographics, a summary of survey results, and recommendations.

SAN DIEGO COUNTY

San Diego County is the sixth most populated county in the United States and the second most populated county in California with an estimated 2.8 million residents. Between 1990 and 2000 the County's population increased by more than 11%, further increasing the diversity of the region (2000 U.S. Census). It is located in the Southwest corner of the State of California and is bordered by the Pacific Ocean to the West, Imperial County to the East, the US-Mexico border to the South, and Orange and Riverside counties to the North.

Figure 1. Map of San Diego County



According to the 2000 US Census, a majority (55%) of the County's residents is White while over one-quarter (27%) are Latino. The remaining 18% of the County's residents are Asian (9%), Black (5%), American Indian or Alaskan Native (1%), Hawaiian or Pacific Islander (0.4%), two or more ethnicities (3%), or "other" (0.2%).

CITY OF ESCONDIDO

The City of Escondido is located in the northern part of San Diego County along Interstate 15, about 18 miles from the coast, 100 miles southeast of Los Angeles, and 30 miles northeast of the City of San Diego.



Brief social and economic history of Escondido

Established in 1888, the City of Escondido's history has been shaped by waves of immigrants from throughout the world - Native Americans, Spaniards, Mexicans, Anglos, Asians, Africans, and others - and development of the region's natural resources including arable land, water, and climate.

Originally called "Mehel-om-pom-pavo" by Luiseño and Kumeyaay, Escondido's early history was characterized by Native American camps and villages located near natural resources. As new waves of European immigrants settled in the region, Native Americans were displaced and moved to federal reservation lands during the nineteenth century.

Subsequently, during the Spanish and Mexican eras, Escondido was known as "Rancho Rincon del Diablo," a land grant belonging to Juan Bautista Alvarado. In the mid 1800s, the area was the ground of a decisive battle during the United States-Mexico War when on December 6, 1846 Anglo soldiers fought the Mexican army at San Pasqual valley. In 1850, California was annexed into the Union signaling a transition of political and economic power from Mexico to the United States.

Capital, innovation, and natural resources contributed to Escondido's economic growth in the late nineteenth and early twentieth centuries. Land development and access to water attracted Anglo immigrants from the Eastern and Midwestern United States and Europe interested in agriculture. Subsequently, the region's expanding economy created work in ranches, groves, and packing houses pulling persons of many ethnic backgrounds - Chinese, Native American, Jamaican, Filipino, Mexican, Mexican-American - to work.

World War II changed the demographic landscape. While Mexican nationals had lived in Escondido since the early 1900s, the United States government began contracting laborers or *braceros* to fill the labor shortage the war caused. A labor camp located near the Mission Park neighborhood on Quince and Valley Parkway housed nearly two hundred Mexican workers. Laborers were contracted to work in Escondido through the 1960s. After the Bracero Program ended in 1964, labor opportunities continued to attract immigrants to live and work in the city of Escondido.

For additional information about Escondido history, visit the Pioneer Room's local history site: <http://www.ci.escondido.ca.us/library/pioneer/history.htm>.

Escondido today and tomorrow

Once home to avocado and citrus groves and small family-run businesses, the City of Escondido now has a population of more than 141,350 and is striving to become a regional economic leader at the forefront of job development and new industries.¹ Like San Diego County, Escondido has experienced significant population growth in the last ten years (22%). Escondido was incorporated on October 8, 1888.

Escondido's growth has been marked by an increase in the Hispanic population. From 1990 to 2000 the City of Escondido's Hispanic population grew approximately 16% (from

¹ California State Department of Finance, 2004



23% to 39%) while the White population decreased 3% (from 71% to 68%).² While the White population is still a small majority (49%), Hispanics represent approximately 42% of the city's total population.³ In comparison to the entire County (27% Hispanic), Escondido has proportionally more Latino residents.

Escondido's economy is comprised of a mix of businesses, supplying a diverse job base. The percentage of employees in select industries is as follows: retail trade (21%), construction (16%), health care (10%), manufacturing (9%), accommodation and food services (9%), administration, support, and waste management (8%), professional, scientific, and technical skills (4%), arts, entertainment and recreation (3%), wholesale trade (3%), management of companies and enterprises (2%), real estate, rental, and leasing (2%), finance and insurance (2%), information (2%), educational services (1%), transportation and warehousing (1%), mining and utilities (1%), and other services (4%) (<http://www.ci.escondido.ca.us/glance/employment/index.html>).

Escondido's education system educates a large number of diverse students. The Escondido Union Elementary School District serves over 20,239 students in kindergarten to eighth grade schools the majority of whom are Hispanic (42%). The rest of the students are White (38%), African American (8%), and Asian (5%). Almost a quarter of elementary students (24%) are Spanish speakers learning English and 42% receive free or reduced meals.⁴

The Escondido Union High School District enrolls about 8,868 students in grades nine through twelve. Hispanic students make up 42% of the total high school student population. Whites comprise 37%, African Americans 8%, and Asians and Filipinos 10%. Twenty-four percent of high school students are English learners and 42% receive free or reduced meals.⁵

In addition to the primary and secondary educational institutions, the City of Escondido also benefits from access and proximity to two institutions of higher education, Palomar College and California State University San Marcos (CSUSM). San Marcos is contiguous with Escondido and the University is located approximately 5 miles from the Mission Park area.

The City of Escondido has a general law government with a city manager and a five-member city council composed of a directly elected mayor and four council members. Residents of its communities are served by two school districts, community based organizations, and governmental entities that provide opportunities that support increased quality of life for all residents.

The mission of the City of Escondido is to provide quality services that enhance the safety, economic diversity, environment, and health of the community, where our customers and employees can thrive in an atmosphere of courtesy, integrity, and respect.

City of Escondido
Mission Statement

² SANDAG 1990 Census Population and Housing Profile, SANDAG Census 2000 Profile

³ SANDAG 2004

⁴ California Department of Education, Educational Demographics Office, 2005

⁵ California Department of Education, Educational Demographics Office, 2005



The San Diego Association of Governments (SANDAG) projects a 24% growth in Escondido by the year 2030, to a population of 163,299.⁶ Given current demographics, the ethnic diversity will increase in Escondido and so will the demand for employment, education, housing, and other services.

CITY OF ESCONDIDO RESOURCES

The City of Escondido currently provides a range of services and programs for residents. Programs and activities for youth, community resources and social networks, employment and economic development, and housing and neighborhood safety are available through or in the City of Escondido (See Appendix: City of Escondido Summary of Services).

The City of Escondido has developed an innovative program called **Neighborhood Porch**, to engage residents. The program's 12-foot trailer is equipped to conduct neighborhood meetings anywhere and anytime. The mobile "Porch" is staffed by City personnel and enables them to listen to residents' concerns, and assists them in addressing or referring residents to appropriate departments or agencies within the city.

The Neighborhood Porch program has two goals:

- Identify and engage leadership in the neighborhoods for the purpose of developing neighborhood improvement activities.
- Increase resident participation and awareness by bringing available resource information about the city and community.⁷

Additionally, the City of Escondido implements a variety of programs and interventions to revitalize the community, promote economic development, and improve community facilities and services with federal funds.⁸

⁶ SANDAG 2004

⁷ <http://www.ci.escondido.ca.us/depts/hns/neighborhood/porch/index.html>

⁸ <http://www.ci.escondido.ca.us/depts/hns/neighborhood/overview/index.html>

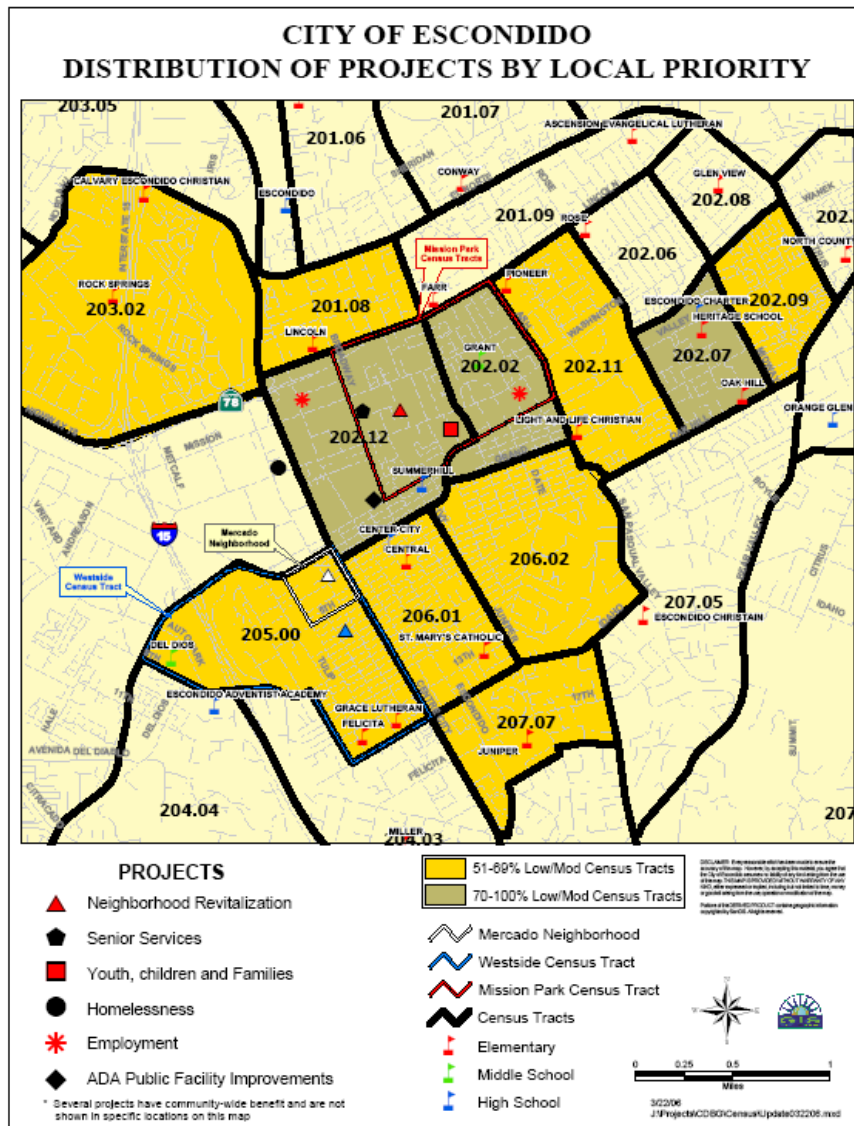


MISSION PARK COMMUNITY

This section contains statistical data as well as descriptive information highlighting the demographic and socio-economic conditions in Mission Park. It begins with a general geographic overview of the Mission Park community, demographics, and key quality of life indicators.

The term "Mission Park" is not readily recognized by community residents. Coined by the city, it demarcates a locale in the center of the City. The area encompasses two low-income census tracts (tracts 202.02 and 202.12). It is bordered by Lincoln Avenue to the north, Ash Street to the east, Valley Parkway to the south and Centre City Parkway to the west. Figure 2 highlights the Mission Park neighborhood at the center of the map.

Figure 2. Map of Mission Park Census Tracts (City of Escondido)



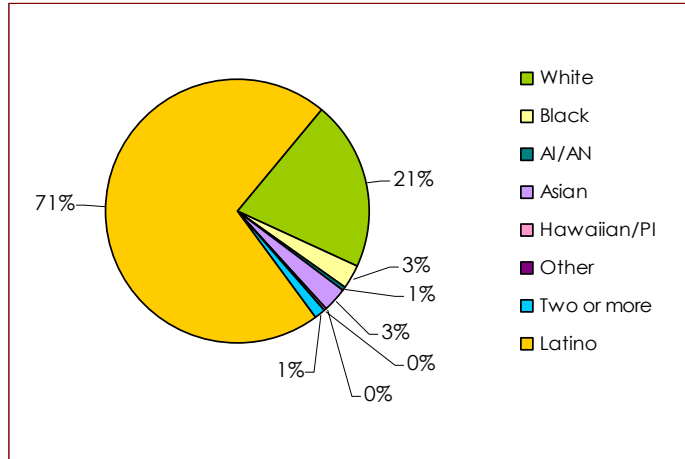
18



Ethnic Diversity in Mission Park

Latinos comprise the majority of the resident population in Mission Park. In 2000, Mission Park was home to approximately 10,070 residents, of whom 71% were Latino.⁹ In 2005, the population had increased by over six-thousand to 16,491 residents of whom approximately 79% are Latino. In addition to Latinos, 2,527 (15%) residents are White, 473 (2.9%) residents are Asian and Pacific Islanders, 375 (2.3%) residents are Black, 85 (0.5%) residents are American Indian, and 293 (1.8%) residents are of other ethnic background.¹⁰

Figure 3. Mission Park Population by Ethnicity (2000 U.S. Census)



Quality of Life Indicators in Mission Park

As further described in this report, the Mission Park community is challenged by a variety of issues, including consistently low standing in the areas of education, employment, household earnings, housing conditions, immigration and citizenship, and other quality of life indicators.¹¹

Table 1 highlights quality of life issues in Mission Park compared to the City of Escondido. "West" and "Mission Park" represent the two census tracts previously mentioned (tracts 202.02 and 202.12).

NLRC further subdivided these census tracts into four areas for data collection purposes. Although not all data gathered is reported in this document, additional requests regarding specific data for the Area level can be processed by the NLRC. For maps of these areas, see Figures 13, 14, 15, and 16.

Area 1 is Census Tract 202.02, South of East Lincoln Ave, North of E. Mission Ave, West of North Ash St, and East of North Fig St.

Area 2 is Census Tract 202.02, South of Mission Ave, North of East Washington Ave, West of North Ash St, and East of North Fig St.

Area 3 is Census Tract 202.12, South of East Lincoln Ave, North of East Mission Ave, West of North Fig St, and East of Centre City Parkway.

⁹ SANDAG Data Warehouse Census Tracts 202.02 and 202.12, 2000

¹⁰ SANDAG Current Estimates, Census Tracts 202.02 and 202.12, 2005

¹¹ SANDAG Data Warehouse Census Tracts 202.02 and 202.12, 2000



Area 4 is Census Tract 202.12, South of West/East Mission Ave, North of West/East Washington Ave, West of North Fig St, and East of Centre City Parkway.

Whenever available, data is further subdivided into four geographic areas used by the NLRC for data collection purposes.

Table 1. Highlight of Quality of Life Indicators of Mission Park¹²

Quality of Life Indicators	West (Tract 202.12)	Mission Park (Tract 202.02)	City of Escondido
Hispanic or Latino (of any race)	78%	69%	39%
Average Family Size	4.36	4.27	3.50
Percent population 0-19 years of age	40%	40%	≈30%
Median Income	\$21,420	\$30,507	\$42,567
Percent of individuals living in poverty	38.6%	26.8%	13.4%
Percent w/ no high school diploma	61%	51%	27.4%
Families (with children under 18) living below poverty level in 2000	43.4%	29.3 %	14.1%
Percentage of persons with low or moderate income (<80% of San Diego median income)	85%	70%	40%
Percent never attended college	70%	78%	48.6%
Single female households w/children under 18 yrs. of age	75.6%		30.1%
Renter occupied housing units	67.1%		46.7%
Percent of household income paid for gross rent	33.3%		29.4%

With an average federal poverty rate of 29%, the Mission Park area has been identified as having one of the most rapidly growing poverty rates in the State of California, with twice as many families below the California poverty level, and nearly three times below the national poverty threshold (U.S. Census, 2000).

Table 2 below subdivides socio-economic indicators by the four Mission Park sub-areas used in data survey data collection compared to the City of Escondido. The median household income in Area 4 (\$17,382) is less than half the City's median household income (\$42,567).

¹² Mission Park Baseline Data Collection-Community Economic and Health Indicators; SANDAG Data Warehouse, Census Tracts 202.02, 202.12; SANDAG Census 2000 Profile; San Diego County Child and Family Health & Well-Being Report Card 2001



Table 2. Socio-Economic Indicators of Mission Park Residents¹³

	Area 1 (Tract 202.02)	Area 2 (Tract 202.02)	Area 3 (Tract 202.12)	Area 4 (Tract 202.12)	Escondido
Median Household Income	33,785	29,875	25,625	17,382	42,567
Per capita Income	10,092	11,552	7,222	8,379	18,241
Population in Poverty	674	447	715	944	17,759
% Population in Poverty	29%	18%	26%	42%	13%

Immigration and Citizenship Status

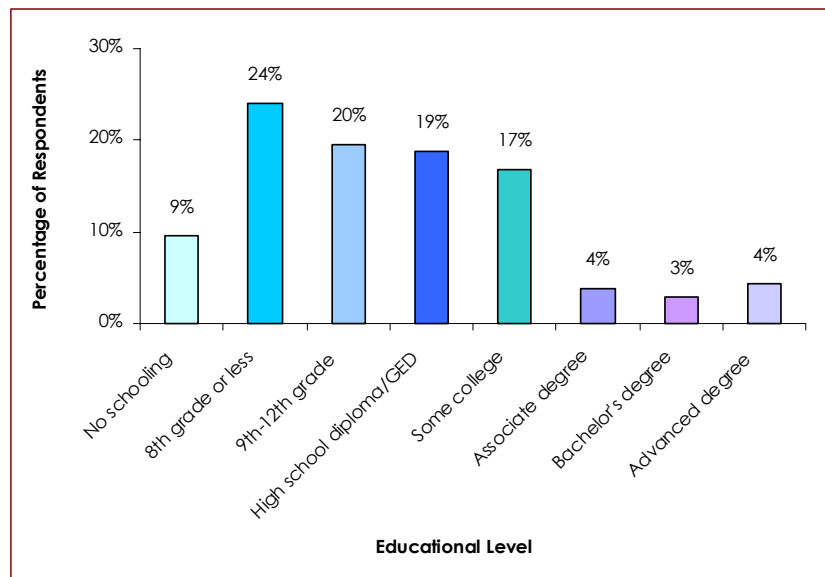
The Mission Park area is home, and often the “first stop” for many new immigrants seeking better opportunities in the United States. Language is a barrier for many, with 44% speaking English less than “very well”. Although the survey did not collect information about citizenship status, this seems to be key consideration for residents in this community.

Education

Educational attainment of Mission Park’s adult residents is relatively low. Fewer than half of residents have completed high school (47%), and only one in ten residents have earned an Associate, Bachelor’s, or advanced degree (11%).

The Mission Park community is served by two elementary schools (Farr and Pioneer) and one middle school (Grant). All report school data to the California Department of Education.

Figure 4. Educational Attainment of Mission Park Residents (2000 U.S. Census)



¹³ Mission Park Baseline Data Collection-Community Economic and Health Indicators; SANDAG Data Warehouse, Census Tracts 202.02, 202.12; SANDAG Census 2000 Profile; San Diego County Child and Family Health & Well-Being Report Card 2001



Grant Middle School provides a disconcerting snapshot of key indicators that characterize the surrounding area:¹⁴

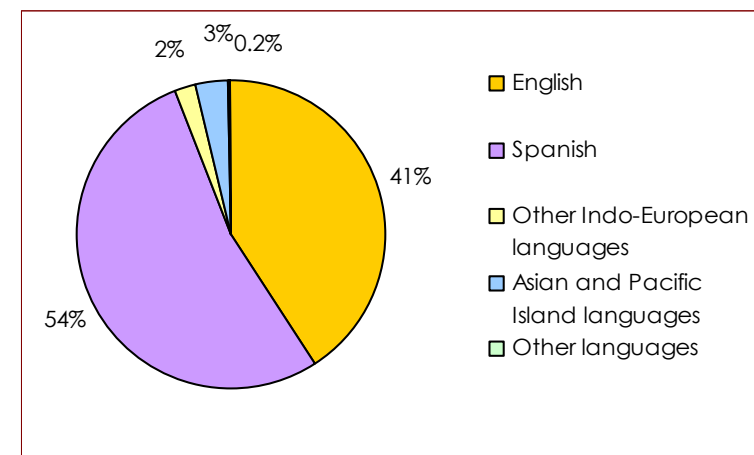
- ❖ Close to 90% of Grant Middle School students meet the criteria under the National School Lunch Act. This figure is nearly two times the statewide figure for California as well as for San Diego County.
- ❖ Nearly 43% of students are limited English proficiency (LEP) students, more than twice the California rate of 23%.
- ❖ The attrition rates at the two secondary schools that serve Grant Middle School students are disturbingly high, with 32% and 41% drop out rates, respectively.
- ❖ Approximately 85% of Grant Middle School parents speak Spanish but less than 10% of the teachers and administrators are bilingual, creating significant barriers to parent involvement.

Other issues exacerbating poor quality of life for the youth and young adults of Mission Park include high rates of teen pregnancy (three year average rate for teen pregnancy of 66.2 per thousand as compared to the North Inland regional average of 21.9¹⁵), unaffordable and inadequate child care and after-school programs, and a lack of enrichment activities for youth and young adults.

Language

A majority of Mission Park households are primarily Spanish speaking (54%). A large minority of households speak primarily English (41%). A few households speak other Indo-European languages (2%), Asian or Pacific Island languages (3%), or other languages (0.2%).

Figure 5. Household Language of Mission Park Residents (U.S. Census 2000)



Housing Indicators

Mission Park has a total of 2,694 housing units, of which 2,611 (97%) are occupied. On average, housing units in Mission Park are home to a larger number of residents than in the City of Escondido or San Diego County.

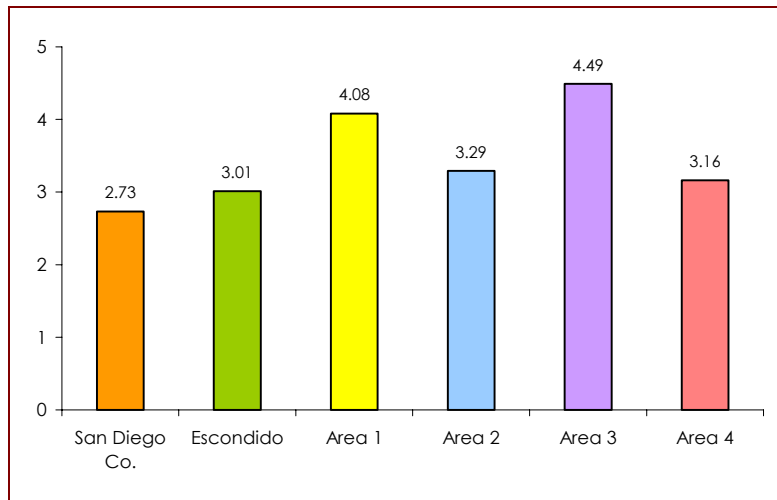
¹⁴ "And College for All"

¹⁵ San Diego County Health and Human Services Agency Child and Family Health & Well-Being Report Card 2001



Mission Park is primarily composed of rental housing. Within Mission Park, 20% of occupied housing units are owner-occupied and 80% are renter-occupied. This is in sharp contrast to the City of Escondido, in which 53% of occupied housing units are owner-occupied, and San Diego County, in which 55% of occupied housing units are owner-occupied.

Figure 6. Average Household Size of Residents (U.S. Census 2000)

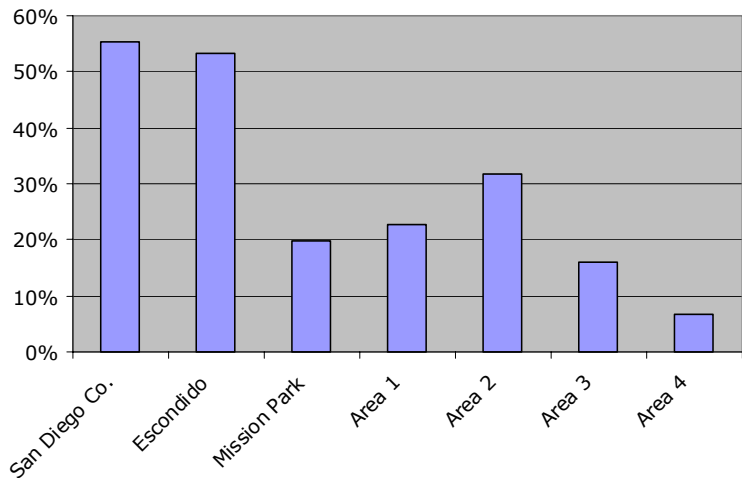


City of Escondido, HUD Consolidated Plan, 2005

Mission Park residents face an array of housing-related challenges that contribute to poor quality of life, including overcrowding, a limited and often deteriorating housing stock, and high rents. The area is characterized by high-density housing units that are often overcrowded and overburdened with extended families or multiple families living in 1 or 2 bedroom apartments.

Overcrowding: As discussed in the City's Consolidated Plan, overcrowding is caused by the combined effect of low earnings and high housing costs and is defined by the Census as households with more than 1.01 persons per room (excluding bathrooms, kitchens, hallways and porches). The City of Escondido has documented a significant increase in overcrowding, particularly in the Mission Park area where the average family size is 4.32 and the cost burden for rent exceeds 33% of the household income. Furthermore, overcrowding is more acute in renter-households. In Escondido over 98% of Hispanic renter-households that were

Figure 7. Owner-Occupied Housing Units in Mission Park



City of Escondido, HUD Consolidated Plan, 2005



classified as low-income or extremely low income, experienced problems with overcrowding, physical housing defects, and/or high cost burdens.¹⁶ The City has also identified an acute need for affordable rental units that accommodate larger families (with three or more bedrooms).

Overcrowding and high density contribute to an array of related problems that can lead to unsafe and unhealthy conditions that adversely impact area residents. Lack of space and privacy places additional burdens on families and may severely limit the areas for children to study and play. Overcrowding can also contribute to general deterioration of structures, excess trash, overburdened facilities and substandard housing conditions. Renters who are new immigrants and/or are exceeding the unit capacity are also less likely to complain or identify maintenance problems that could lead to unhealthy housing (mold, mildew, poor ventilation, lead, roach or rodent infestations, or other potential health hazards).

Transient nature of community: Mission Park's transient nature (short tenure status) of community residents has contributed to a lack of "ownership" in making the community a better place to live. As previously mentioned, 67.1% of the housing units in the Mission Park area are renter-occupied. Not surprisingly, homeowners are more invested in improving the quality of the Mission Park community. A good example is the Park Place Neighborhood Group that has been successful in working with the City to carry out revitalization projects in Mission Park and elsewhere in Escondido.

Latino home ownership: While homeownership among Hispanics grew nationwide to 46.7% as of December 2003, this rate falls significantly short of the nation's overall average of 68.3%.¹⁷ The Mission Park area is no exception. Obvious barriers to Latino homeownership include low incomes and high housing costs, but other important barriers can be attributed to poor consumer education, discrimination, and a lack of outreach to the Latino market.

¹⁶ City of Escondido, HUD Consolidated Plan, May 2005.

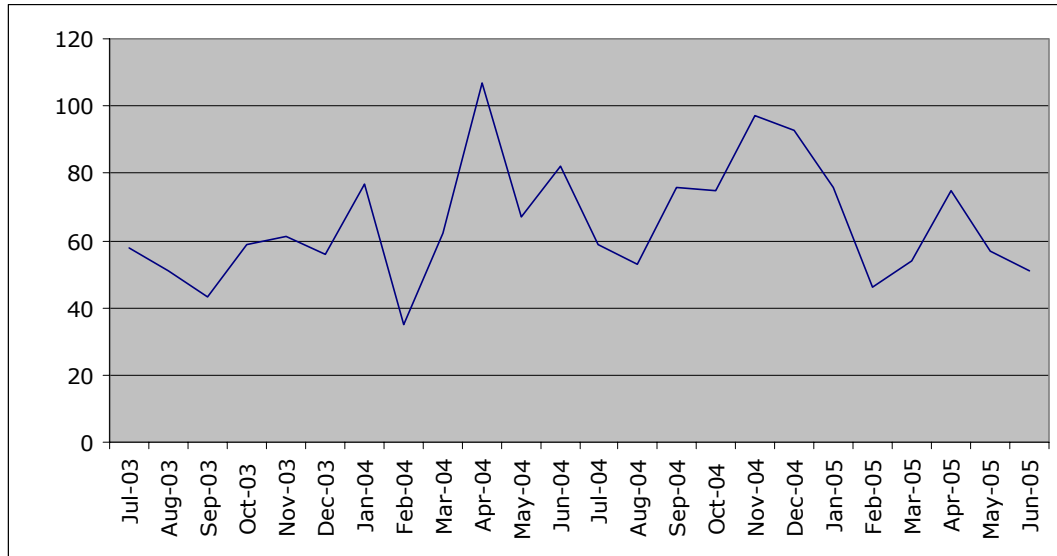
¹⁷ U.S. Census Bureau 2000



Crime

Monthly statistics are available detailing the occurrences of several types of crimes in Mission Park, identified by Escondido Police as Beat 42, through the Automated Regional Justice Information System (ARJIS).

Figure 8. Monthly Crime Index for Mission Park, July 2003-June 2005



Note: Crime Index equals the sum of Total Violent Crime and Total Property Crime, ARJIS

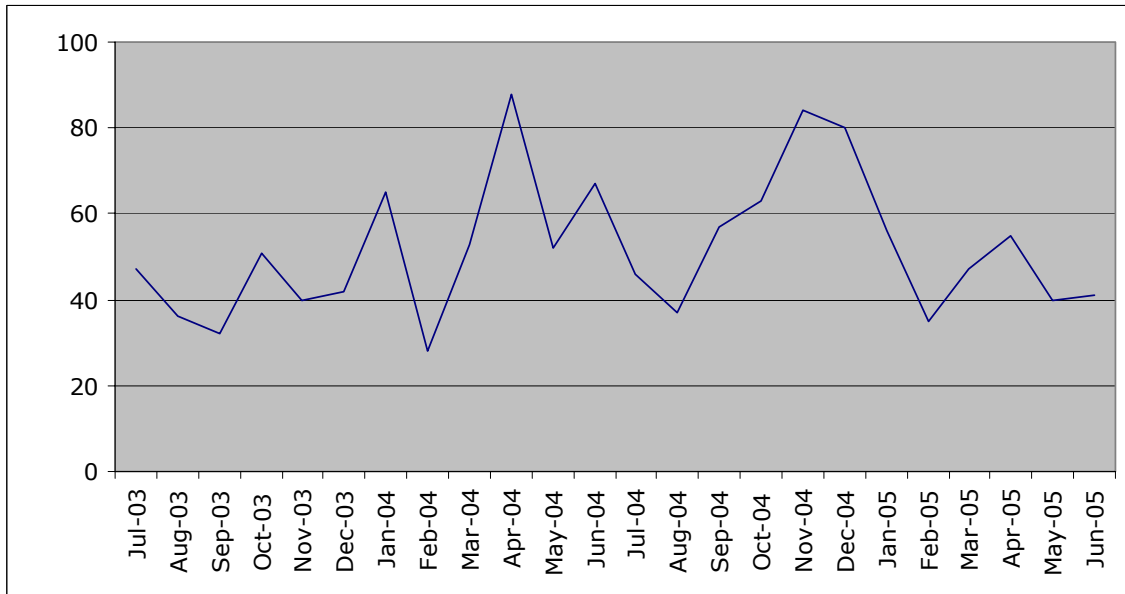
During the 24 months preceding this study, the overall Crime Index (combining reported violent and property crimes) in Mission Park fluctuated from month to month but indicated an overall stable level of crime over the longer term period. In an average month, 65.4 crimes were reported in Mission Park; the Crime Index ranged from a low of 35 to a high of 107. Of these crimes, 79% were property crimes while 21% were violent crimes.

Similar to the overall Crime Index, data on reported property crimes (burglary, thefts, and motor vehicle thefts) fluctuated from month to month but were relatively stable over the full 24-month period. In an average month, 51.8 property crimes were reported in Mission Park; the reported property crimes ranged from a low of 28 to a high of 88.

For additional information about crime statistics in Escondido, see Escondido Police quarterly reports: <http://www.ci.escondido.ca.us/police/news/statistics/index.html>.



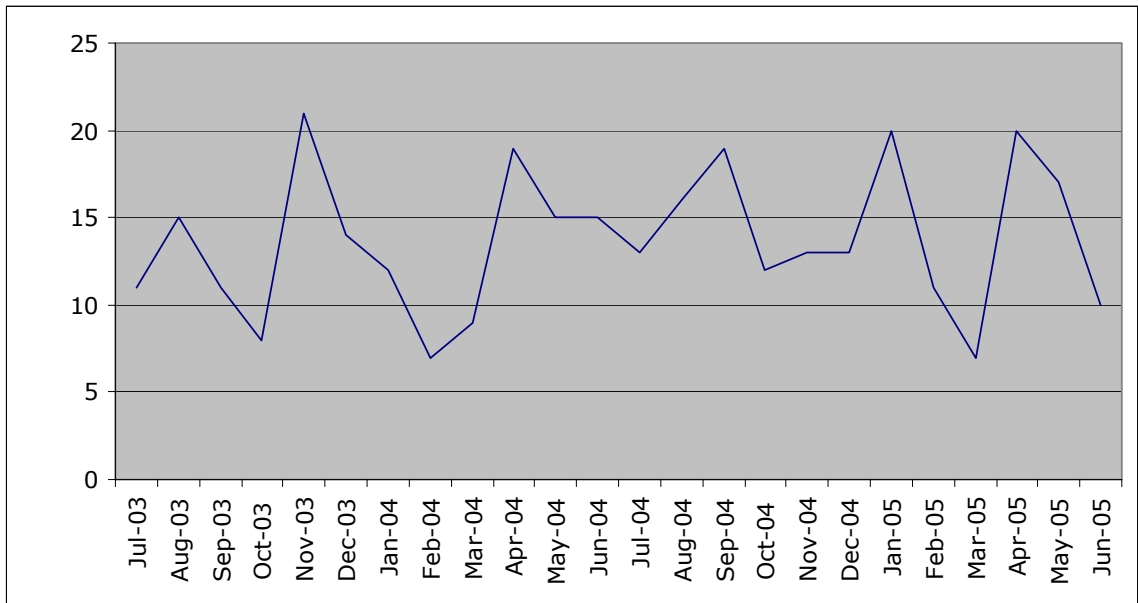
Figure 9. Total Monthly Property Crime in Mission Park, July 2003-June 2005



Note: Total Property Crime equals the sum of Total Burglary, Total Thefts, and motor vehicle thefts; ARJIS

Reported violent crimes (murders, rapes, robberies, and assaults) also fluctuated from month to month but were relatively stable over the 24-month period preceding this study. In an average month, 13.7 violent crimes were reported; reported violent crimes ranged from a low of 7 to a high of 21.

Figure 10. Total Monthly Violent Crime in Mission Park, July 2003-June 2005



Note: Total Violent Crime equals the sum of murders, rapes, robberies, and assaults, ARJIS



Summary

According to population forecasts, as the Mission Park Community grows, the median age of residents will stay low at 25 years, incomes will remain low, and the proportion of residents who are Hispanic will grow.¹⁸ It is this growing population of low-income, young Hispanics concentrated in Escondido's inner core, low-income census tracts, which is targeted for the Mission Park project. This population and their families face numerous challenges related to poverty including high unemployment, lack of educational attainment, and language barriers. The City of Escondido's Five-Year Consolidated Plan prioritizes efforts to increase the quality-of-life opportunities in the City of Escondido, particularly in Mission Park.

The Census Bureau predicts that the Mission Park area of Escondido will grow steadily in overall population within the next ten years. The Hispanic population will grow from 74% to 81%, the median age will remain low at 25 years, and median earnings will stay well below even the current median for the City of Escondido. These forecasts point to a community that is currently, and will continue to be, in great need of interventions in order to significantly improve quality of life for its residents.

¹⁸ SANDAG Data Warehouse Census Tracts 202.02 and 202.12



BACKGROUND TO MISSION PARK COMMUNITY SURVEY

Recent scholarship on community-based strategies for change suggests grassroots activity could possibly impact communities and society at large. The Mission Park partnership sought to initiate a discussion to advance issues of equity and economic justice in Mission Park. Partners agreed to support a multi-pronged strategy starting with a needs assessment that would involve community residents, service providers, and researchers. The assessment results would then be used to work with community resident to identify common problems or goals, mobilize resources, and, develop and implement strategies for reaching the objectives they want to accomplish.

Community Dialogue

In addition to examining the statistical data outlined above, the Mission Park partners also initiated numerous discussions with local residents and community-based organizations between 2003 and 2005 to include resident voices and strategies in the research project. A reoccurring concern that emerged through these discussions was the level of civic isolation that exists among residents in the Mission Park area. Due to a combination of factors, service providers and residents alike described a general “disconnect” between community members and local institutions and agencies.

Figure 11. Neighbor-to-Neighbor Dinner, June 2004



With this in mind, the university and partner agencies involved Mission Park residents in identifying and prioritizing the key issues as well as developing strategies and objectives for the needs assessment. The need for civic engagement and community involvement in Mission Park is further supported in the City of Escondido's Consolidated Plan where priority emphasis is given to increasing “quality of life opportunities for Mission Park Area students and families by

improving their social and physical environment” (2005, p. 6).

Through a series of community dialogues, focus groups, and community forums, the Mission Park project sought to include community residents. In the spring of 2003, faculty member/NLRC Associate Dr. Kim Knowles-Yáñez and AmeriCorp volunteer Vanessa Riedel organized a focus group with residents of the Park Place Neighborhood Association in Mission Park to learn more about their concerns, priorities and ideas for a Mission Park community-university partnership. As a small but active group, they noted that even long-term residents of the neighborhood did not start getting to know each other until the neighborhood group was formed in 1999. As a prime example of the effectiveness of resident engagement, the group has been successful in getting city



funding for the uniform black fencing that now defines the boundaries of their neighborhood. The city supplied the material while neighborhood residents supplied the labor.

Members of the group expressed a variety of concerns that ranged from language barriers to lack of information and limited access to resources. A specific recommendation that was echoed by members of the group early on was the development of a "Centro de Padres" (Parents' Center or Family Resource Center) which would serve as a place for disseminating bilingual information about resources and opportunities. It would also serve as a place for children to work on computers after school and other training opportunities for members of the community.

"Neighbor-to-Neighbor" Dinner Discussions

With the help of the City of Escondido, the Mission Park partners convened another community dialogue in June 2004, identifying a group of residents and community leaders to participate in a "Neighbor-to-Neighbor" dinner discussion. Over 30 people participated, including residents and representatives from the local schools and school board, churches, community-based organizations, the City of Escondido, the local community college, the National Latino Research Center, and Cal State San Marcos faculty. City and NLRC/CSUSM staff provided bilingual facilitation for several roundtable discussions about the strengths, challenges, and most significant barriers in the Mission Park community. See Table 3 for an overview of strengths and opportunities discovered and Table 4 for a list of barriers and needs identified for Mission Park.

The outcome of these discussions was an overwhelming consensus that Mission Park would benefit significantly from (1) a civically engaged community; (2) increased collaboration with schools and expanded educational enrichment programs; (3) and neighborhood revitalization which included decent and affordable housing. Residents again expressed a lack of access to information (particularly in Spanish) and limited knowledge about available resources. Additionally they recognized community assets including the schools and the potential of residents to "take back" Mission Park. The following table summarizes the strengths and barriers generated at the community meeting held on June 1, 2004.

Figure 12. Neighbor-to-Neighbor Dinner, June 2004



Table 3. Strengths and/or Opportunities in Mission Park

Strengths and/or Opportunities	
Schools	The area schools are an asset, but more programs and collaborations with the schools need to be cultivated. In particular, Grant Middle School (in the heart of Mission Park area) is seen as an important asset in the community and an ideal location for events.
Parent Involvement Programs	The Parent Institute and ESL program for parents are two examples of parents working well with teachers and becoming involved in the schools.
Social Capital	The Latino community has many hardworking, dedicated, and caring people of all ages with great potential to work together, make a difference, "take back" their neighborhood and make Mission Park area a better place to live.
Neighborhood Associations	The area has organized neighborhood associations such as Park Place Group.
Communication Networks	There is good communication among neighbors, particularly in times of need.
City Resources	There are City resources that are focused on improving the quality of life in the Mission Park Area. In particular, there are programs such as the City's "Neighborhood Porch" as well as the resident leadership training courses sponsored by the City.
Walkability	Most stores and schools are located within walking distance.
Family/Youth Programs	The programs at the Boys & Girls Club as well as the YMCA are community strengths, but more after-school programs are needed.



Table 4. Barriers and/or Needs in Mission Park

Barriers and/or Needs	
Deteriorating Schools	While local schools were considered an asset, residents expressed a need for infrastructure improvements, more space, more collaboration with schools, and more after-school and educational enrichment programs.
Civic Isolation & Lack of Community Involvement	<ul style="list-style-type: none"> ❖ Residents are not civically engaged, informed, or involved ❖ Low voter registration and many new citizens not voting because they are unsure about the process or feel overwhelmed ❖ Residents who are unfamiliar with civic institutions, the role of government, or how to access government services
High Density Housing & Overcrowding	<ul style="list-style-type: none"> ❖ Lack of affordable apartments/housing ❖ Lack of support from landlords & housing management ❖ Overcrowding in apartments with multiple families living under one roof leading to many related issues such as excess trash, stress and lack of space for children to study and play ❖ Transient nature of community with many residents who are not rooted in the community and may not be committed to making it a better place.
Lack of information & fear	<ul style="list-style-type: none"> ❖ Fear of immigration/border patrol ❖ Lack of information about services and resources ❖ Community members don't know each other
Crime, gangs & safety	<ul style="list-style-type: none"> ❖ Lack of police & poor communication ❖ Lack of security and safe places for youth ❖ Need for a neighborhood watch system ❖ Concern about small children walking by themselves to and from school ❖ Negative influence of numerous liquor stores, particularly en route to schools
Trash, graffiti & overall deterioration of neighborhoods	There is a general need for improving the overall appearance of the community and to revitalize buildings and eliminate excess trash, litter, and graffiti.
Lack of parks & recreational facilities	There is not enough green space, parks and facilities where families & children can safely play.
Lack of organizations	Residents expressed a need for a Family Resource Center as well as a center that supports women and mothers in particular.



“Defining Your Community”

In March 2005, a focus group was conducted by the NLRC with Escondido residents participating in the Neighborhood Civic Leadership Program (NCLP), a training developed by Community HousingWorks and funded by the City of Escondido. NCLP offers opportunities for participants to build and strengthen leadership skills, and provides networking opportunities and tools which can be applied towards developing stronger communities. The topic for this focus group was “Defining Your Community” and was dedicated to discussing common community goals. A total of 9 Mission Park residents participated. Of the participants, 5 were Latino and 3 were monolingual Spanish and/or limited English speakers. Residents again expressed a lack of access to information (particularly in Spanish) and limited knowledge about available resources. In addition, residents identified many health conditions (diabetes, cardiovascular disease, and obesity) as well as lack of affordable health insurance, fear of deportation, and a general lack of knowledge about health conditions, services and resources. They also concurred that addressing these issues requires that the community work in partnership with private and public organizations, businesses, the media, government officials, health care agencies, educational institutions and researchers.

The Mission Park partners have recognized the need to engage residents in defining their community, cultivating their social networks, documenting their past and current contributions, and building the community’s social capital. Social capital, as defined by the World Bank, refers to “the institutions, relationships, and norms that shape the quality and quantity of a community’s social interactions....social capital is not just the sum of the institutions which underpin a society – it is the glue that holds them together”.¹⁹ A growing body of evidence suggests that communities with high social capital are more likely to benefit from lower crime rates, better health, higher educational achievement, and better economic growth.

Concerns expressed in the dialogues and focus groups were incorporated into the community survey design to better understand resident perceptions regarding youth issues and activities, community resources and social networks, employment & economic development, and housing and neighborhood safety.

¹⁹ World Bank (1999) <http://www.worldbank.org/poverty/scapital/whatsc.htm>



MISSION PARK COMMUNITY SURVEY

Between May and December 2005, a community survey was conducted among 200 residents of the Mission Park community to assess residents' perceptions and priorities for improving their community. Survey participation focused on residents who were at least 18 years of age. Participation was also strictly voluntary. The survey was conducted door-to-door by bilingual interviewers in both English and Spanish. A small incentive (\$10 grocery store gift card) was offered to participants. Interviews were conducted during the week and on weekends at various hours of the day.

To obtain a more representative sample of community residents, the community was divided into four data collection areas according to U.S. Census boundaries.

The following maps illustrate each of the areas covered:

Figure 13. Mission Park Area 1

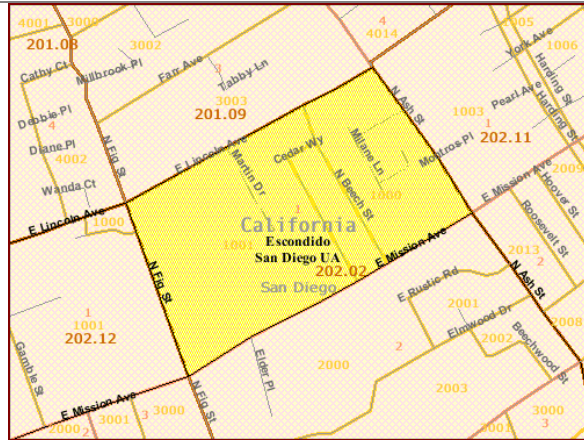


Figure 14. Mission Park Area 2

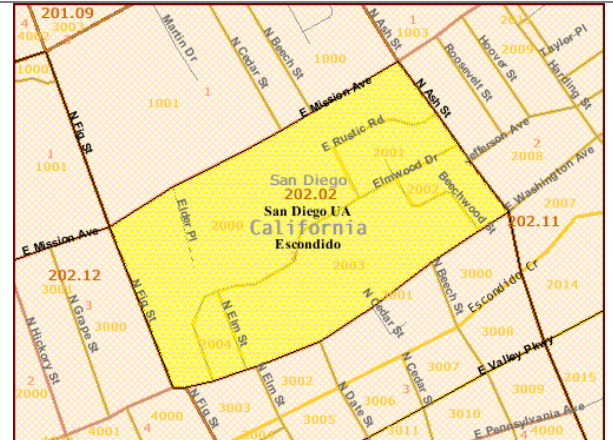


Figure 15. Mission Park Area 3

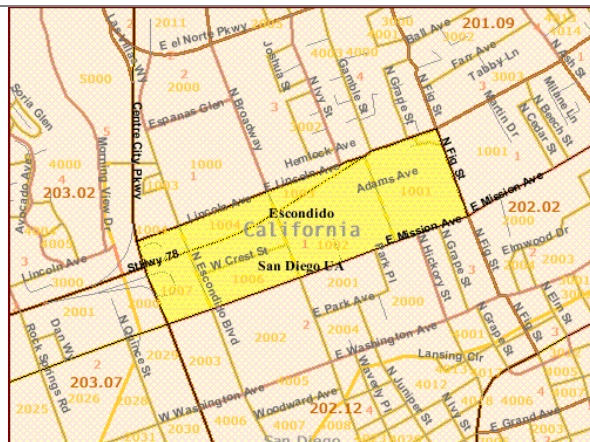
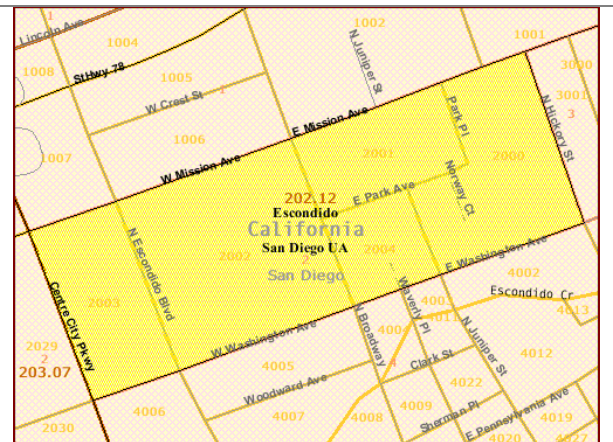


Figure 16. Mission Park Area 4



The survey was approximately 25 minutes long and focused on four key areas: Youth Issues and Education, Community Resources and Social Networks, Employment and Economic Development, and Housing and Neighborhood Safety. The survey closed with a brief section to obtain demographic information.

After a brief introduction, the survey began with questions about youth issues and education. The first part of the youth section asked for all residents, whether parents or not, to respond to questions about schools, neighborhood safety for children, and youth recreational opportunities. Specific questions were also included for parents of children 17 and under and for parents of children enrolled in local schools.

The second survey section consisted of questions about community resources and social networks. This section included questions about social services and government assistance, health care and health insurance, social connections with the community, and city services.

A third section asked community residents about employment and economic development. This section asked about the economic and employment situation in Mission Park broadly and within each interviewee's family.

The fourth section focused on housing and neighborhood safety. This section assessed affordability and quality of housing, the impact of cost of living on residents, and residents' perception of neighborhood safety and crime.



SURVEY PARTICIPANT DEMOGRAPHICS

Ethnicity

The vast majority (88%) of survey participants identified their ethnicity as Hispanic or Latino. The remainder identified as White (8%), African American (2%), Asian or Asian American (0.6%) and "Other" (1%).

Figure 17. Ethnicity of Mission Park Residents (by area)

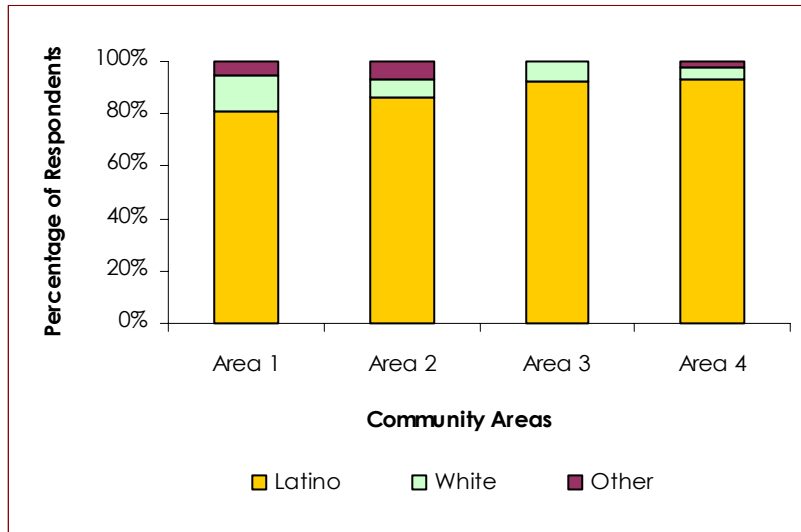
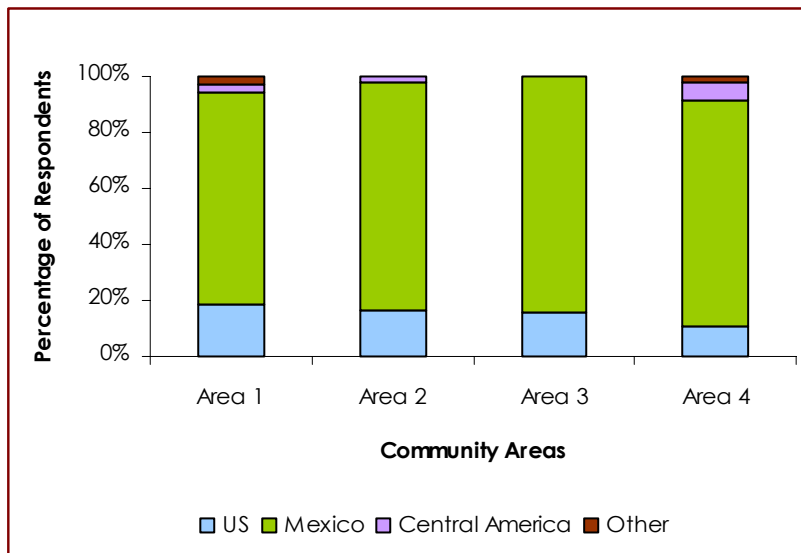


Figure 18. Country of Birth (by area)



Socioeconomic Indicators (income)

Eighty-five percent of survey participants reported family income; 2% declined to provide income information and 13% did not know the family income. Among survey participants who provided income information, family income levels were relatively low.

Immigration and nationality

A large majority (85%) of survey participants were born outside of the United States. Most participants (81%) were born in Mexico, while fewer were born in other non-U.S. areas (Central America: 3%, "Other": 1%).

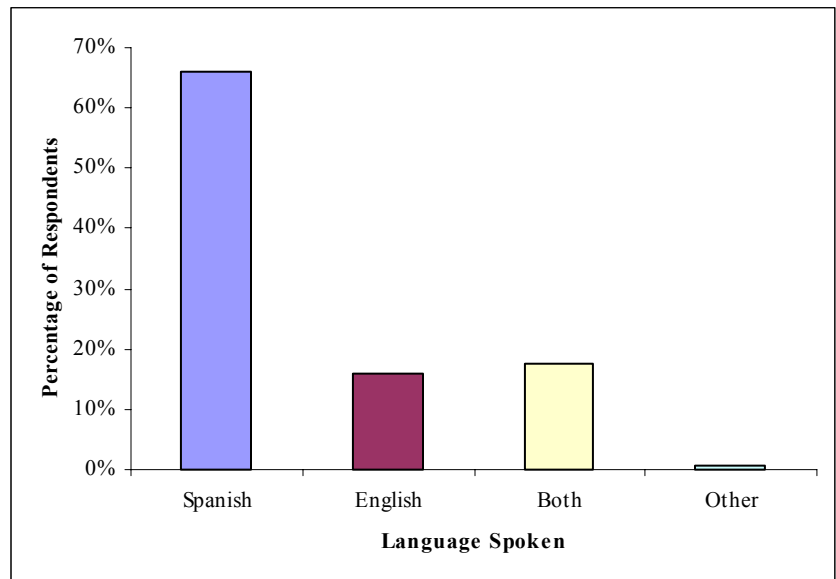
Educational attainment

Similar to U.S. Census data for the area, survey participants have generally attained low levels of education.

Language use

When asked "In what language do you usually communicate?" a majority of respondents (66%) indicated Spanish. A substantial number (18%) indicated that they communicate in both Spanish and English, 16% indicated English, and 0.2% indicated each of Mixteco, French and Swahili, and Tagalog.

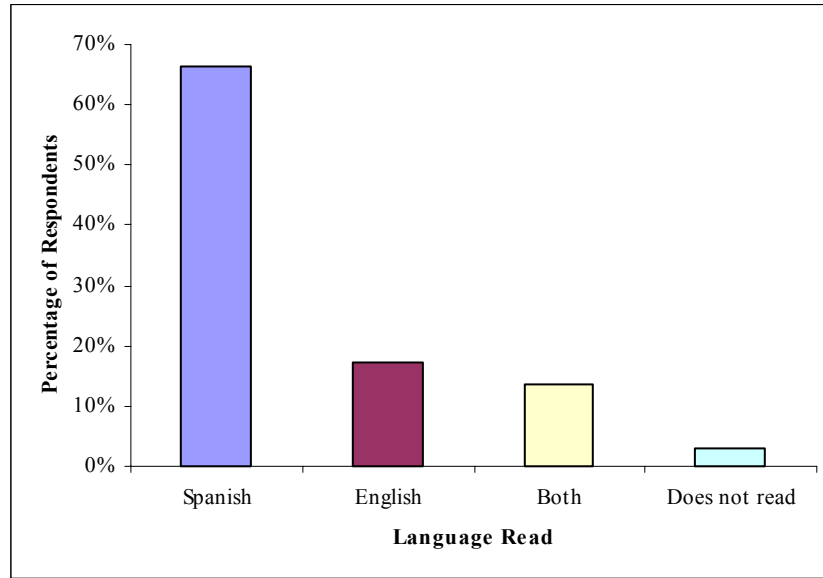
Figure 19. In what language do you usually communicate?



When asked "In what language do you read most?" a majority of respondents (66%) indicated Spanish. Several participants (14%) indicated reading equally in both Spanish and English, 17% indicated reading most in English, and 3% of participants indicated that they do not or cannot read.



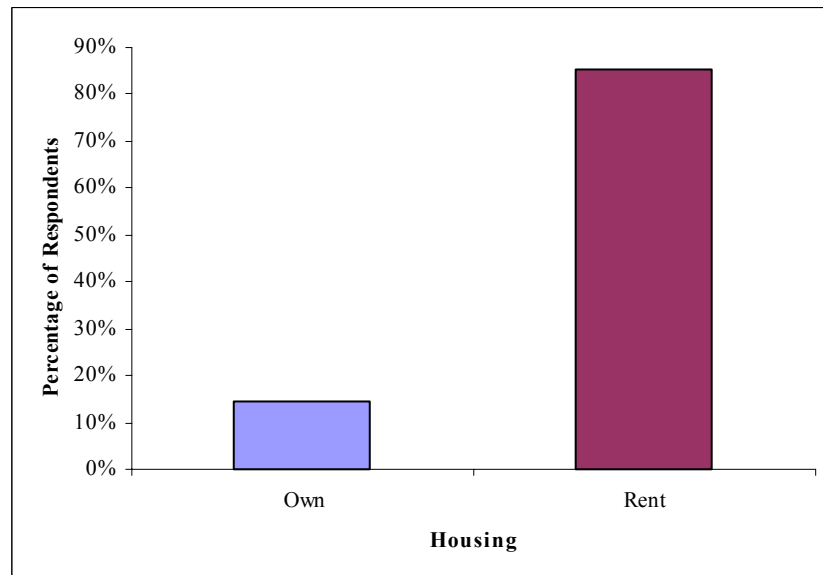
Figure 20. In what language do you read most?



Housing Indicators

Survey participants have lived in Mission Park for an average of 5.6 years, with a range from 0 months to 60 years. The vast majority (85%) of respondents indicated that they rent their homes, while only 15% live in owner-occupied homes.

Figure 21. Do you own or rent? By area



Most survey respondents (76%) live in multi-unit complexes such as apartments or condos. A smaller group (23%) lives in single-family homes, while 0.6% lives in mobile homes.



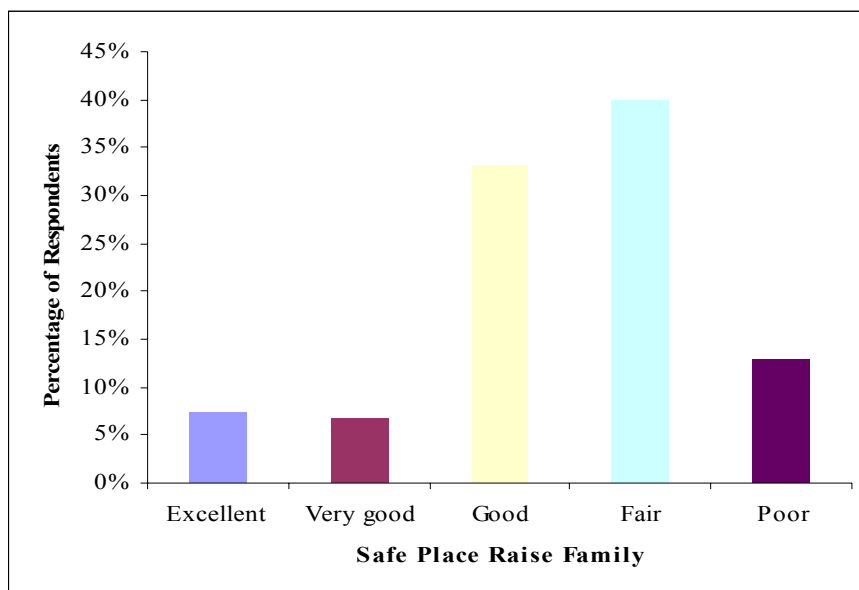
YOUTH ISSUES & ACTIVITIES

According to the census approximately 5,814 (35% of total population) persons under the age of seventeen live in Mission Park.²⁰ Among our survey participants, 72% reported having children 17 or under. To assess the needs of children in Mission Park, we asked all participants questions relating to youth issues, education, and activities. Certain questions were asked of only those respondents with children 17 or under, or with children enrolled in local schools.

Before asking participants about specific youth issues such as safety and education, we asked broadly **“How would you describe your community as a place to raise a family?”** Respondents indicated the following:

- Excellent: 7%, Very good: 7%, Good: 33%, Fair: 40%, Poor: 13%.
- Overall, 73% believe Mission Park is a good or fair place to raise a family.

Figure 22. How would you describe your community as a safe place to raise a family?



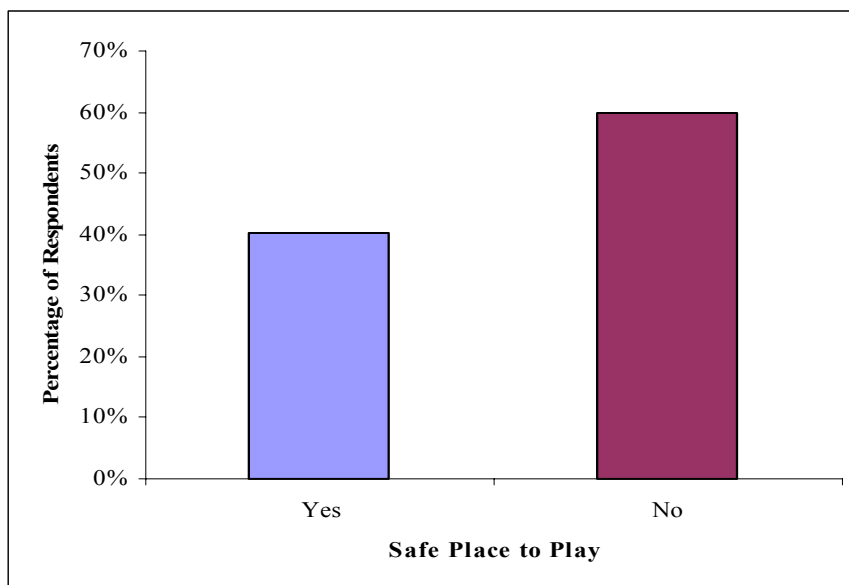
Youth Safety

In relation to youth safety and recreational space, all participants were asked: **“Do you feel that children have a safe place to play in your neighborhood?”** 60% of respondents believe children DO NOT have a safe place to play in the neighborhood. A quarter of residents living in Area 1 (South of Lincoln Ave, North of E. Mission Ave, West of North Ash St and East of North Fig St) and Area 2 (South of Mission Ave, North of East Washington Ave, West of North Ash St, and East of North Fig St) agree that children have a safe place to play.

²⁰ SANDAG Current Estimates, Census Tracts 202.02 and 202.12, 2005



Figure 23. Respondents who agree that children have a safe place to play in their neighborhood



All participants were asked: **“Do you feel that local schools provide a safe learning environment for the community’s children?”** 79% agree that schools are safe environments for children.

Participants were asked: **“What are the most serious problems facing the local schools today?”** Respondents identified the following problems:

- gangs
- security issues
- discrimination
- too few teachers
- too many students/overcrowding
- drugs
- kidnapping
- not enough money/funding
- not enough materials/resources
- not enough schools
- children performing below grade
- crime
- vandalism
- lack of parent involvement

Participants were asked: **“What safety issues concern you?”** (asked of people who responded “no” to schools providing a safe learning environment) Respondents identified the following safety issues affecting the learning environment:

- drugs
- gangs
- delinquency
- lack of quality education
- racial/ethnic differences
- lack of lighting around the schools

Participants were asked: **“What are the best things happening in the local schools today?”** Respondents identified the following:

- activities
- after-school programs
- attention from teachers
- bilingual programs
- communication with teachers
- computers
- quality of education/learning
- sports



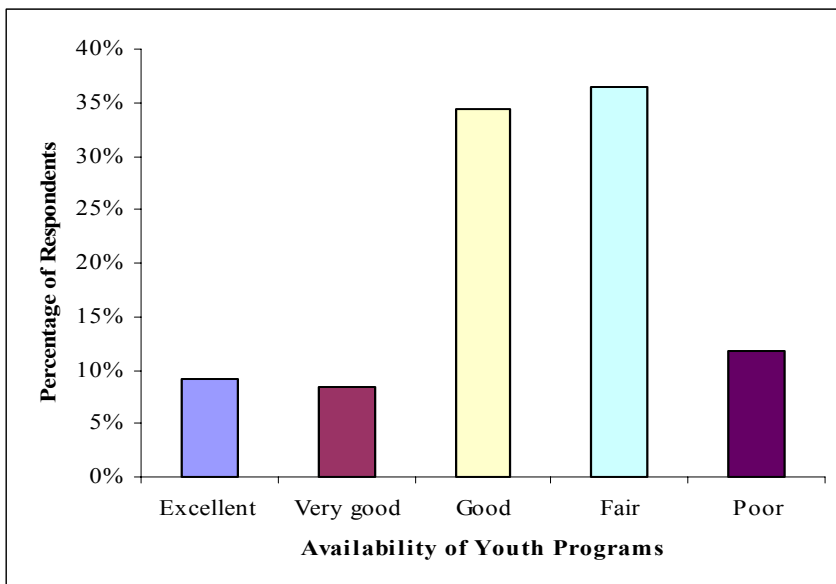
- good teachers
- security/safety
- Spanish-speaking teachers
- help for parents
- breakfast and lunch programs
- AVID
- homework

Youth Recreation

Participants were asked: **“How would you rate the availability of recreational facilities, activities, and programs for youth in this community?”** *(asked of all participants)*

Respondents indicated: Excellent: 9%, Very good: 8%, Good: 34%, **Fair: 36%**, Poor: 12%. Overall, **70%** believe recreational facilities, activities, and programs for youth are good or fair in the community. However, **nearly half (48%)** reported fair or poor availability of youth programs and activities.

Figure 24. Availability of recreational facilities and programs for youth

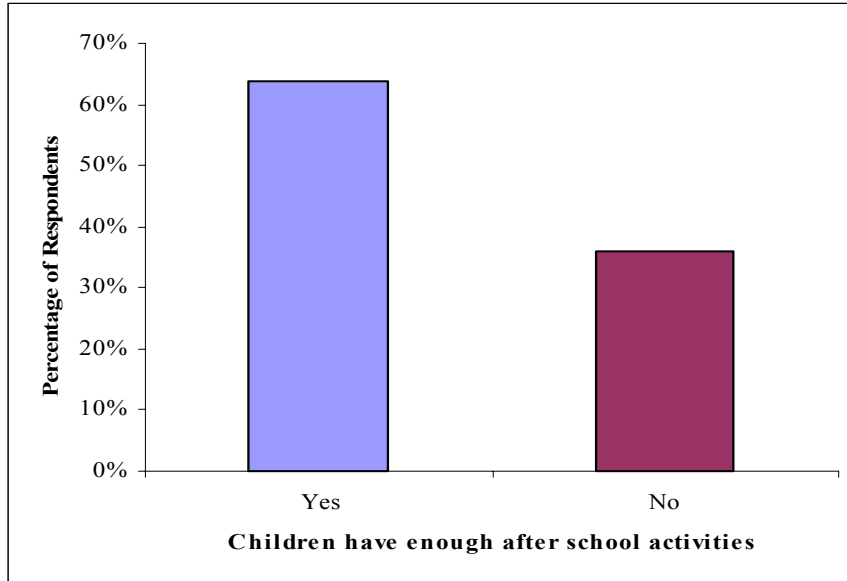


Participants were asked: **“Does your child have enough activities after school and on weekends?”** *(asked of participants w/ children 17 or under)*

64% of respondents said yes and **36%** answered no.



Figure 25. Respondents who agree that their children have enough activities after school



Participants were asked to identify **reasons for not having enough recreational activities for children to engage after school and on weekends** – multiple responses allowed (asked of parents who say child does not have enough activities).

Half of the respondents indicated that “nothing that interests my child is available” in the community, 34% attributed the reason to cost of activities, 26% to transportation, and 14% to a conflict with sibling or parent activities.



Education

Eighty-nine survey respondents indicated that they have children enrolled in local private and public schools. Schools listed by parents include:

Elementary schools: Farr Elementary, Lincoln Elementary, Conway Elementary, Pioneer Elementary, Rock Springs Elementary, Rose School Elementary

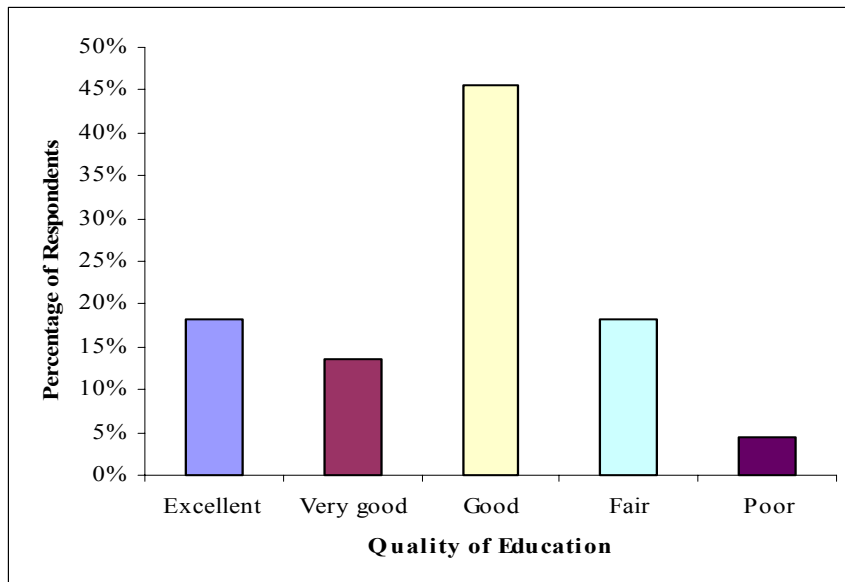
Middle schools: Grant Middle School, Rincon Middle

High schools: Escondido High, Orange Glen High, Valley High

Private: Heritage Charter, Palomar

Parents of schoolchildren were asked how they would rate the **quality of their child(ren)'s education**. Respondents said: Excellent: 18%, Very good: 14%, **Good: 46%**, Fair: 18%, Poor: 5%.

Figure 26. How would you rate the quality of education of your child?



Parent Education and Involvement

Participants were asked: “**Have you ever attended any parenting classes or parent support groups?**” (*asked of participants w/ children 17 or under*). Over half (53%) of parents said they've attended parenting classes or parent support groups.

Participants were asked: “**How helpful are/were the classes or support groups?**” (*asked of parents who have attended classes/support groups*).

Respondents said: Excellent: 26%, Very good: 31%, **Good: 34%**, Fair: 8%, Poor: 2%. More than half of the parents who have participated in classes or support groups ranked the quality of helpfulness as excellent or very good.

Participants were asked: “**Would you like to attend parenting classes or parent support groups?**” (*asked of parents who have **not** attended classes/support groups*). **More than half (64%)** of parents who have not attended classes or support groups indicated they would like to attend parenting classes and/or parent support groups. 11% expressed an interest in parenting classes only, 5% in parent support groups only, and 20% expressed no interest.

The following questions were asked only of parents of schoolchildren.

Participants were asked: “**How often do you talk to your child about what is happening at school?**”

Respondents said: **Daily: 73%**, At least once a week: 21%, At least once a month: 3%, Less than once a month: 1%, Never: 2%.

Participants were asked: “**How often do you participate in activities at your child(ren)'s school(s)?**”

Respondents said: Often: 31%, **Sometimes: 53%**, Never: 16%.

Participants were asked: “**On average, how much time each week do you spend helping your children with school work?**”

Parents reported spending an average of **3.9 hours** per week helping their children with school work (Range: 0 minutes – 20 hours).

Participants were asked: “**Would you use a parent resource center, if available?**”

Ninety-two percent of respondents said they would use a parent resource center, if one was available in the neighborhood. Of those parents who said they would use a parent resource center **sixty-eight percent (68%)** of respondents said they would use the parent resource center weekly or more, 19% monthly, 9% a few times a year, and 4% once a year.



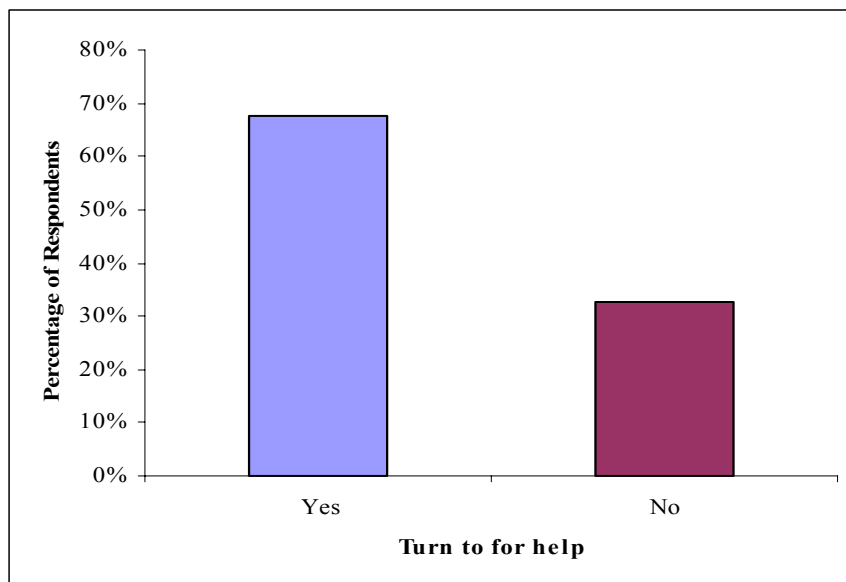
COMMUNITY RESOURCES & SOCIAL NETWORKS

Survey participants were asked to rate the ease with which they are able to access social services, identify strategies for improving access, and report personal experience in seeking and accessing services including the library. Additionally, participants were asked to identify their social networks and contacts within the community. Lastly, participants reported their familiarity with the city government and city-run programs and services.

Social Networks

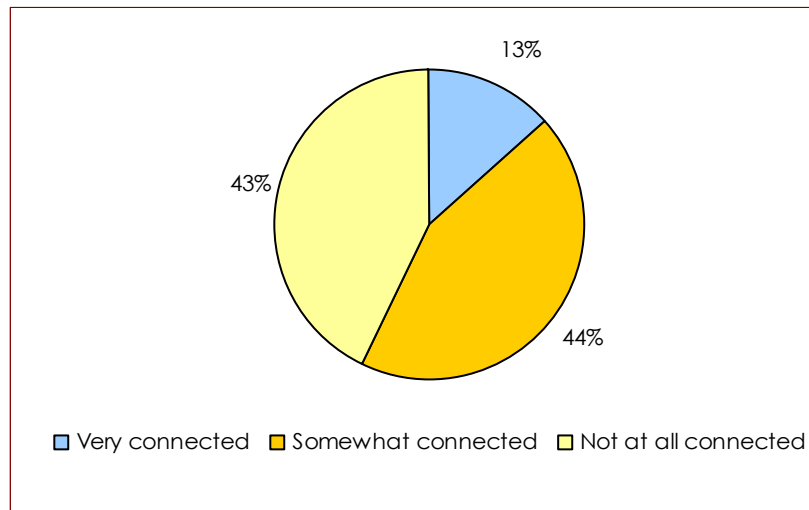
Participants were asked: **“In the past month, would you have had someone you could turn to if you needed or wanted help?”** Yes: 68%, No: 33%. Residents in Area 1 (South of Lincoln Ave, North of E. Mission Ave, West of North Ash St and East of North Fig St) and Area 2 (South of Mission Ave, North of East Washington Ave, West of North Ash St, and East of North Fig St) were less likely to have someone they could turn to if they needed or wanted help.

Figure 27. Respondents who had someone to turn to for help



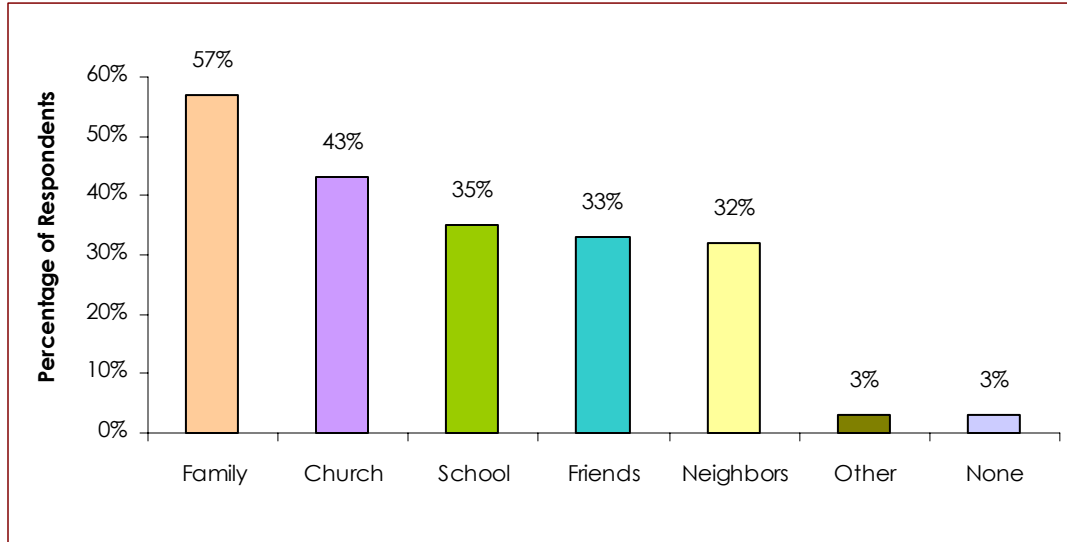
When participants were asked: “**How connected do you feel to your community?**” **forty-three percent** feel “not at all connected” to the community, 44% felt “somewhat connected” and 14% feel “very connected.” Residents in Area 1 (South of Lincoln Ave, North of E. Mission Ave, West of North Ash St and East of North Fig St) and Area 2 (South of Mission Ave, North of East Washington Ave, West of North Ash St, and East of North Fig St) feel the least connected to the community.

Figure 28. How connected do you feel to your community?



When asked **with whom/what are you connected** – multiple responses allowed – the majority (57%) identified the family as the connecting entity. The rest indicated: Church: 43%, School: 35%, Friends: 33%, Neighbors: 32%, Other: 3%, None: 3%.

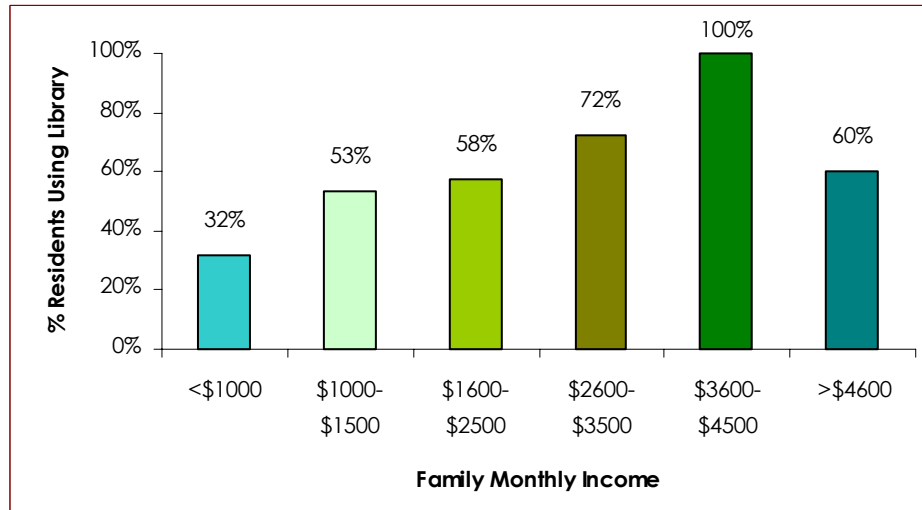
Figure 29. With whom/what are you connected?



Library and Literacy

Participants were asked: **“Have you ever used the Escondido Public Library?”** Respondents answered: Yes: 53% and No: 47%. Figure 31 indicates that overall families with higher monthly incomes use the libraries at a higher rate than lower income families.

Figure 30. Use of Escondido Public Library by Family Monthly Income

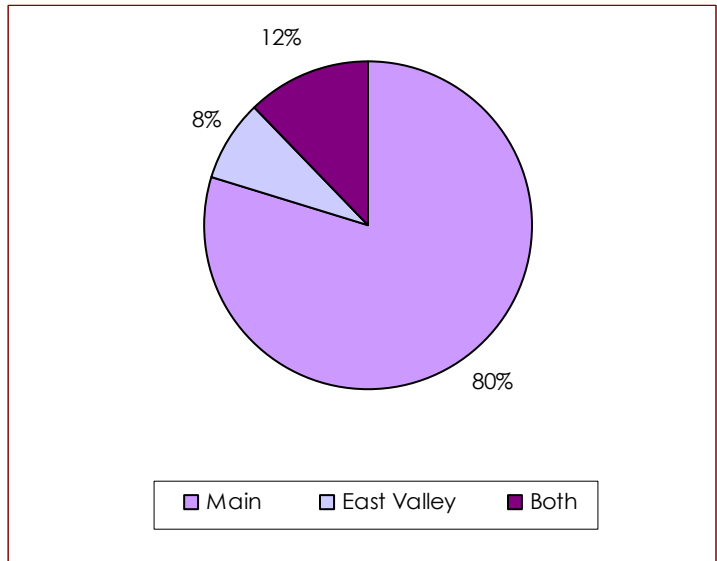


Participants who stated that they have not used the library were asked : **“Why don’t you use the library?”** (multiple responses allowed) the majority (44%) of participants who have not used the library reported not knowing where it is. Twenty-nine 29%: Do not know about it, 25%: stated that it does not have anything I/we need, and 13% indicated other.

Participants were asked: **“Which branch of the library do you use?”** (asked of respondents who have used the Library). The vast majority (80%) of respondents who use the library use the main branch.

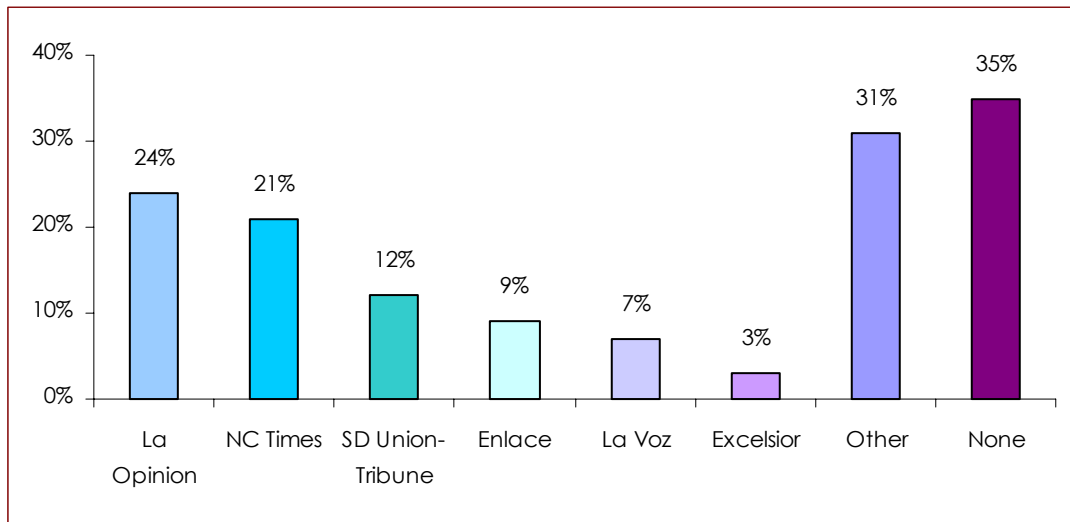
Figure 31. “Which branch of the library do you use?”

Participants were asked: **“Have you attended any programs sponsored by the library in the last year?”** (asked of respondents who have used the Library). Ninety-one percent (91%) said they have not attended any programs sponsored by the library within the last year. The ones who have attended library sponsored programs (9%) reported attending art classes for children, reading program for children and exhibits.



Participants were asked: **“Which newspapers do you read?”** - multiple responses allowed – About a quarter read *La Opinion* Spanish newspaper.

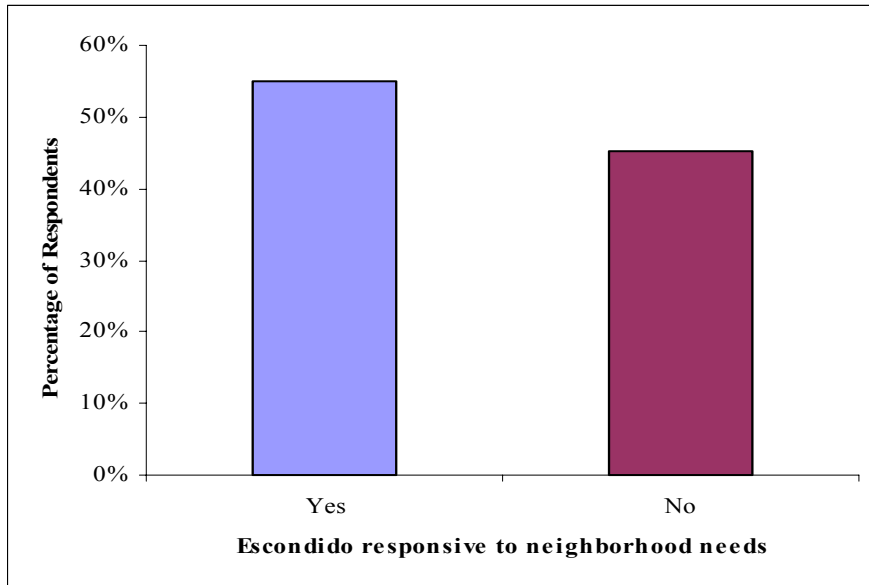
Figure 32. “Which newspapers do you read?”



City Programs

Participants were asked: “Do you feel that Escondido city government is responsive to the needs of your neighborhood?” 55% said yes and 45% no.

Figure 33. “Do you feel that Escondido city government is responsive to the needs of your neighborhood?”



Participants were asked to identify the **city-run programs and services with which they are familiar**. They named the following:

- Cruising Grand
- Code enforcement
- Adult education classes
- Crisis centers
- Energy conservation
- Escondido fairs
- Parks
- Nutrition classes
- Head start
- Police services
- Recreation bulletin
- School for GED
- SDG&E
- Senior citizen centers
- Social services
- Summer camps
- Washington Park
- WIC
- City pool
- Computer classes
- English classes
- Phone services
- Recycling programs
- YMCA
- Youth sports
- Medical services



Access to Health Care

Participants were asked: **“Have you needed healthcare in the past year and been unable to receive it?”**

Yes: 17%

No: 84%

Participants were asked: **“Why couldn’t you receive it?”** (Figure 35)– multiple responses allowed (asked of respondents who answered ‘yes’ above) Responses included:

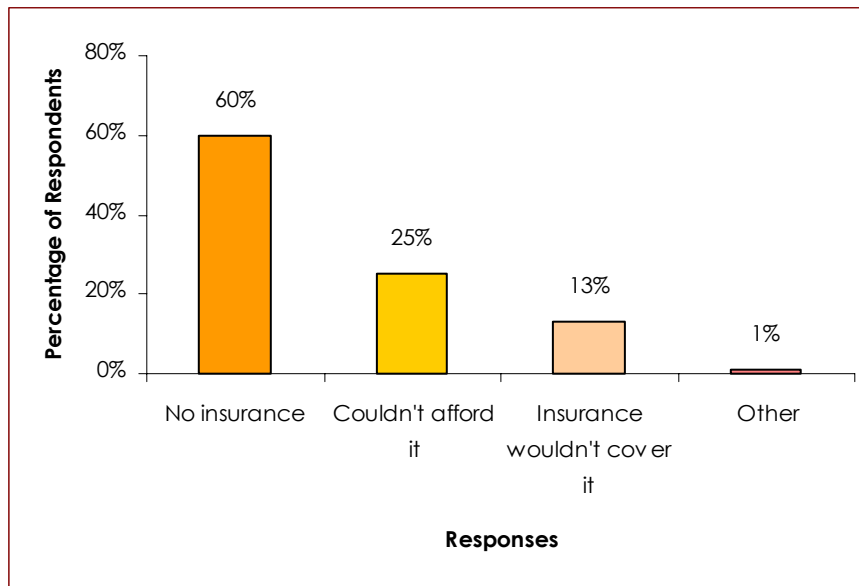
60%: no insurance

25%: couldn't afford it

13%: insurance wouldn't cover it

1%: other

Figure 34. “Why couldn’t you receive healthcare?”



Participants were asked: **“Do you, or does anyone in your immediate family, currently lack health insurance?”** Responses were:

Yes: 57%

No: 43%

Reasons for lack of health insurance include:

- **Born in Mexico and not eligible**
- **Can't afford it**
- Does not qualify
- Employer does not provide health insurance
- Immigration status
- Does not qualify for Healthy Families

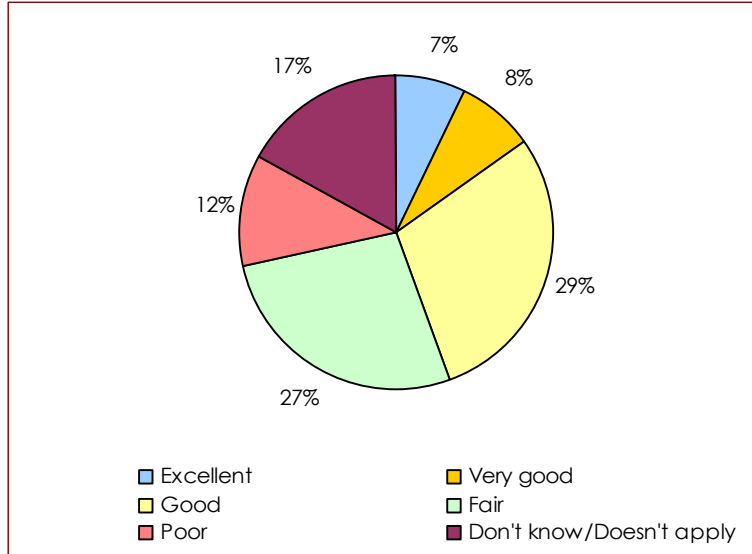


The most frequently cited reasons for lacking health insurance were **cost** and **immigration status**.

Social Services

Participants were asked to comment on accessibility to social services. Questions included: **“How would you rate the ease with which you are able to get social services?”** 56% indicated the ease with which they are able to get social services is good or fair.

Figure 35. “How would you rate the ease with which you are able to get social services?”



Respondents in Area 1 (South of Lincoln Ave, North of E. Mission Ave, West of North Ash St and East of North Fig St) and Area 2 (South of Mission Ave, North of East Washington Ave, West of North Ash St, and East of North Fig St) report having the least ease accessing social services. (See Figure 37)

Figure 36. “How would you rate the ease with which you are able to get social services?”

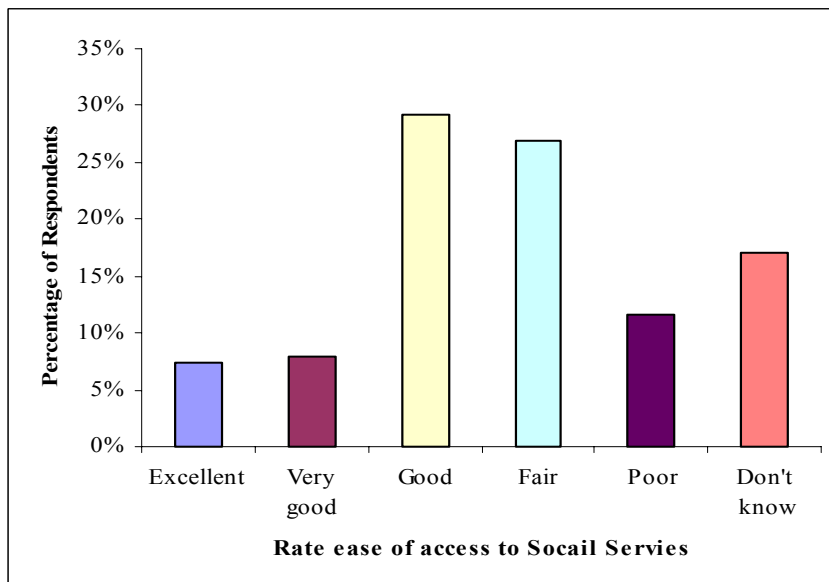
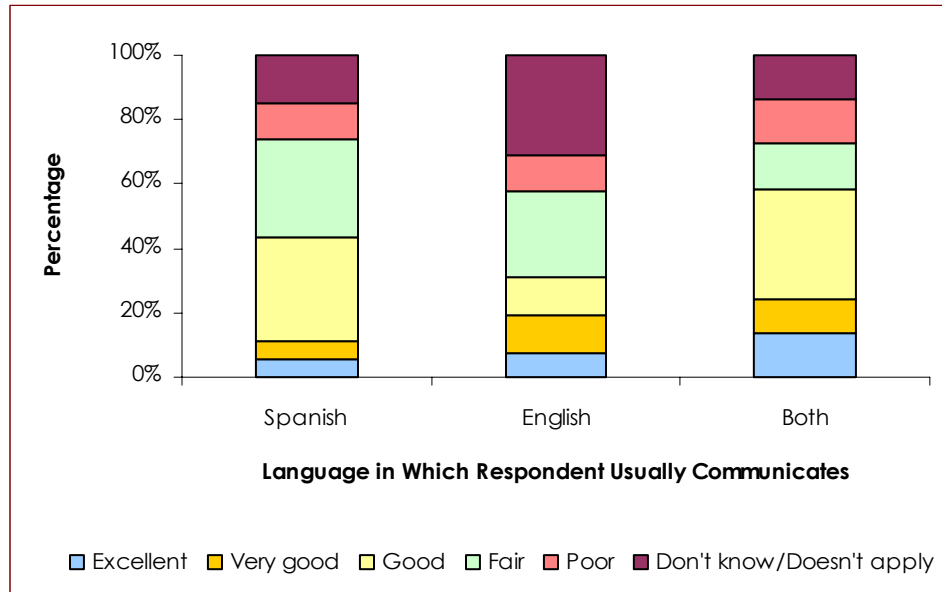
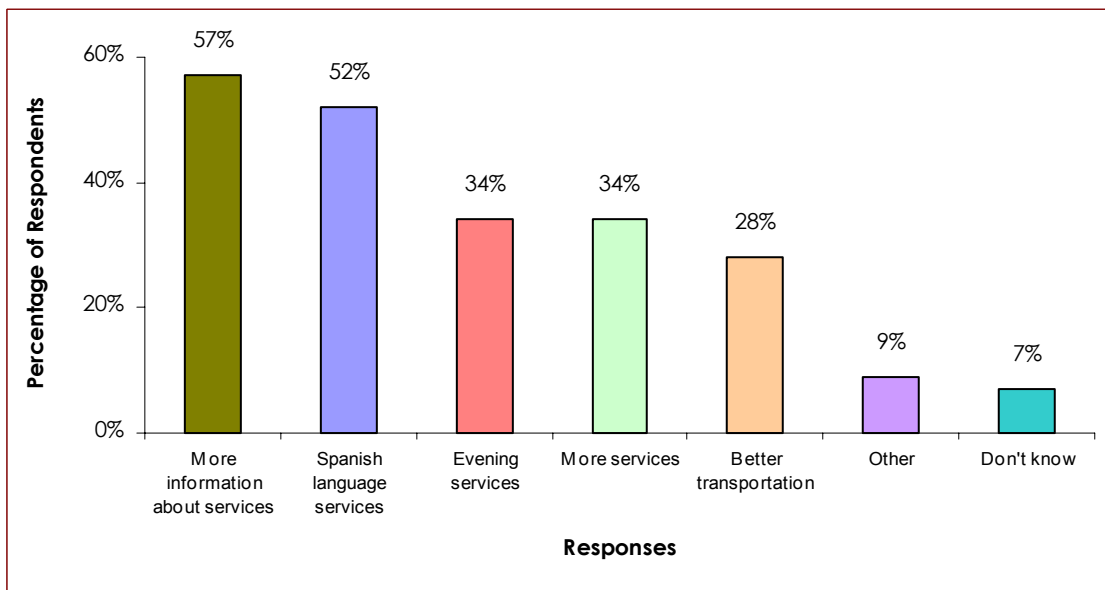


Figure 37. “How would you rate the ease with which you are able to get social services?” by language



Participants were asked: **“What do you think would improve access to social services?”** – multiple responses allowed. More than half (57%) of respondents suggest more information about services is needed.

Figure 38. “What do you think would improve access to social services?”

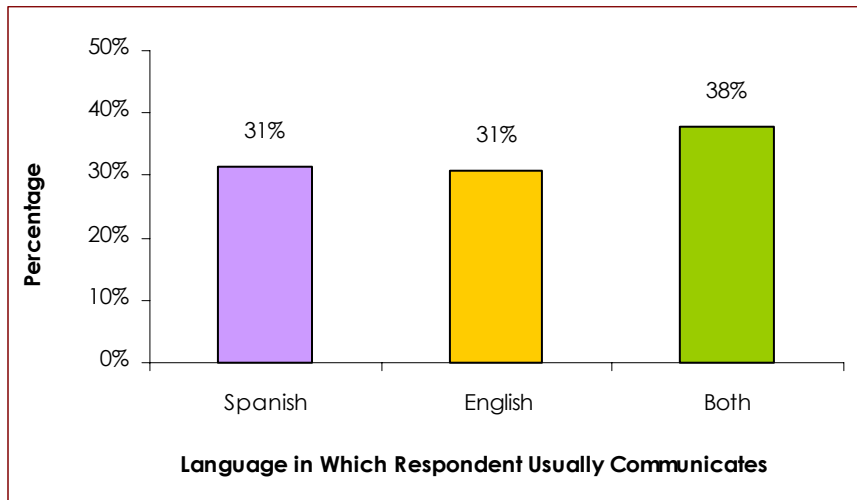


Participants were asked: **“Do you (or your immediate family) currently receive any type of government assistance?”** Responses were, Yes: 33% No: 67%



The majority of participants 67% stated that they did not receive any type of government assistance.

Figure 39. Respondents receiving government assistance by language



Participants were asked: **“What type of government assistance do you receive?”** (asked of respondents who answered ‘yes’ above)

Responses included:

- Medi-Cal
- Calworks
- Child support
- Disability
- Food stamps
- Healthy Families
- HUD
- Social security
- WIC
- AFDC
- Lunch program

Participants were asked: **“Do you know if you are eligible to receive government assistance?”** (asked of respondents who answered ‘no’ above).

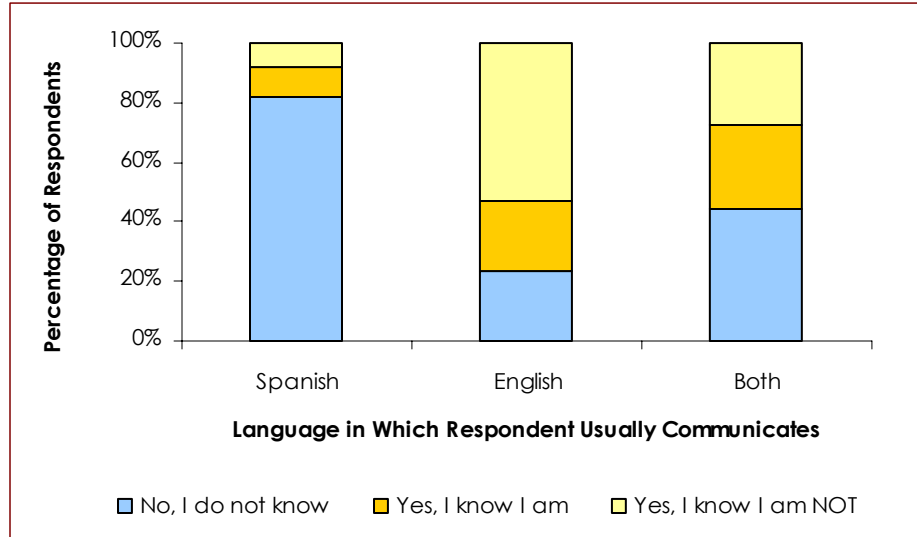
Responses were:

- **No, I do not know if I am eligible: 67%**
- Yes, I know that I am eligible: 15%
- Yes, I know that I am not eligible: 19%



The majority (67%) of Spanish speakers do not know if they are eligible to receive government assistance.

Figure 40. Knowledge of Eligibility of Government Assistance by Language



EMPLOYMENT & ECONOMIC DEVELOPMENT

This section of the survey asked participants about family economics during the last year, employment status and opportunities, and interest in job training and small business development.

Family Economics

Participants were asked: “Do you feel you are better of economically this year than last year?” Responses included:

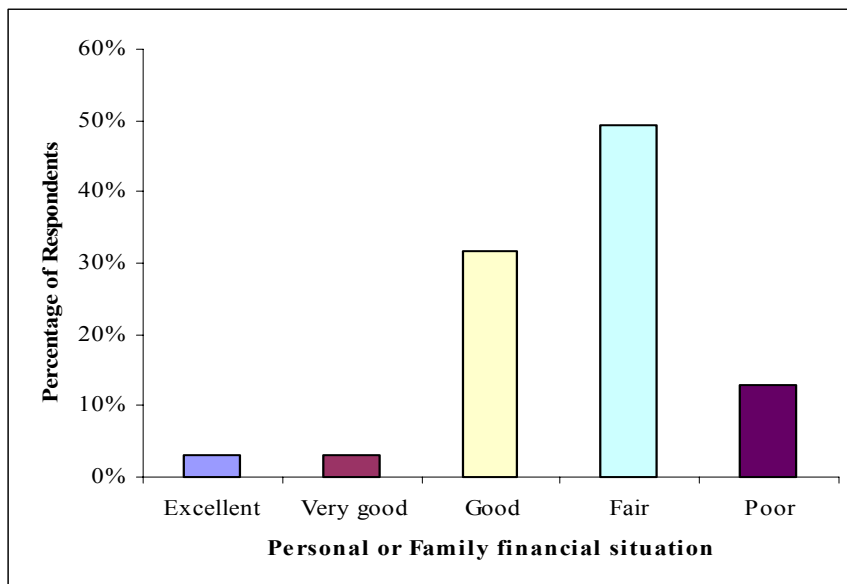
- Better off: 36%
- **The same: 45%**
- Worse off: 19%



Participants were asked: “Overall, how would you rate your personal or your family’s financial situation, in terms of being able to afford adequate food and housing, and to pay the bills you currently have?” Participants described their personal or family financial situation as follows:

- Excellent: 3%
- Very good: 3%
- Good: 32%
- **Fair: 49%**
- Poor: 13%

Figure 41. Personal or family financial situation

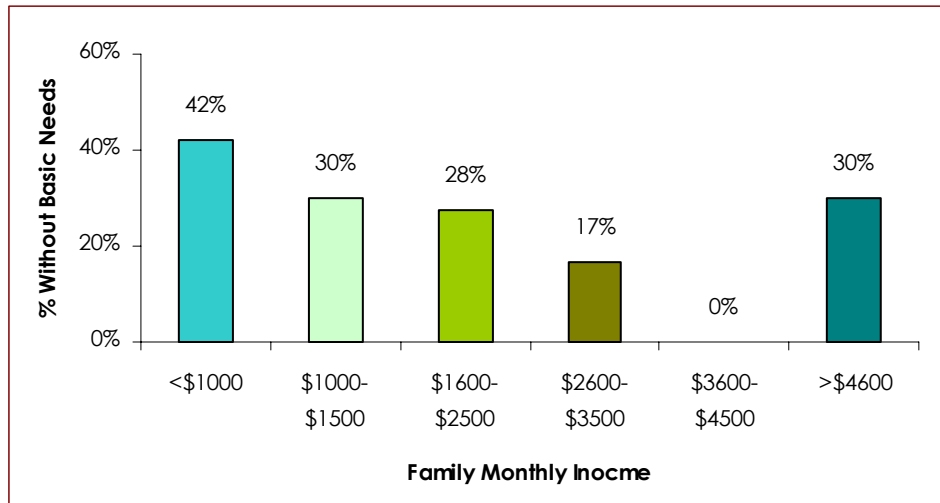


Participants were asked: “in any given month within the last year, did you find yourself having to go without basic needs such as childcare, healthcare, food, or clothing?” Responses were:



Yes: 27%
No: 73%

Figure 42. Going without basic needs?



Participants who answered yes to the above question were asked to identify **what basic need(s) they went without** – multiple responses allowed

Responses included:

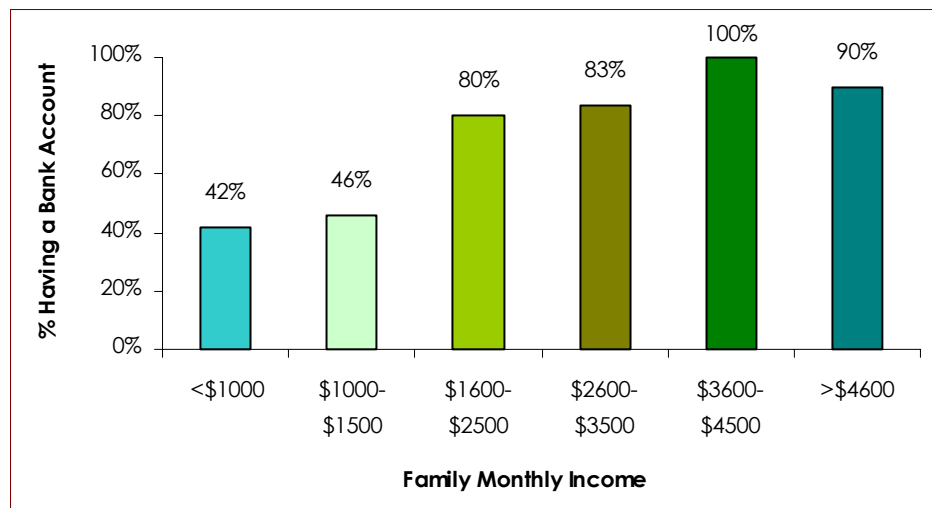
- **Health care: 60%**
- Food: 47%
- Housing/rent: 40%
- Clothing: 29%
- Transportation: 27%
- Childcare: 9%
- Other (listed utilities): 0.6%

Participants were asked:
“Do you or anyone in your family have a bank account?”

Responses were:

Yes: 64%
No: 36%

Figure 43. “Do you or anyone in your family have a bank account?”



Employment Opportunities



Participants were asked: “**How would you rate the employment opportunities that exist in Escondido?**” Responses were:

- Excellent: 3%
- Very good: 4%
- Good: 28%
- **Fair: 41%**
- Poor: 24%

As indicated above the majority (69%) of respondents believe employment opportunities in Escondido are fair or good while almost a quarter indicate employment opportunities are poor.

Participants were asked: “**Do you feel that you have opportunities to work in this area?**” (Note: some people answered yes to this question and noted “retired”)

- Yes: 39%
- **No: 61%**

The majority of respondents **do not feel they have work opportunities** in the area because of the following reasons:

- **Language barrier: 54%**
- Not enough jobs: 39%
- Discrimination: 37%
- Low-paying jobs: 30%
- No jobs in my field: 28%
- Transportation: 21%
- Poor economy: 16%
- Not enough training: 14%
- Affordable childcare: 11%
- Disability: 5%
- Other: 7%

Participants were asked: “**Do you feel that your family members have opportunities to work in this area?**” (Note: some people answered yes to this question and noted “retired”) Responses were:

Yes: 43%

No: 57%

Those who feel that their **family members do not have opportunities** to work in the area cited the following reasons:

- **Language barrier: 57%**
- Not enough jobs: 43%
- Discrimination: 38%
- Low-paying jobs: 35%
- No jobs in my field: 30%
- Transportation: 19%
- Poor economy: 16%
- Not enough training: 16%
- Affordable childcare: 14%
- Disability: 0%
- Other: 4%
- N/A (no family in area): 2%



Participants were asked: **“What is your employment status?”** Responses were:

- Employed full time: 35%
- Employed part time by choice: 7%
- Employed part time, seeking full-time employment: 1%
- Self-employed: 6%
- Unemployed (seeking employment): 18%
- Unemployed by choice, including retired: 34%
- *(From above data)*
- Employed: 49%
- Underemployed: 19%

Participants were asked: **“How far do you travel to work each day (one-way)?”**

Responses were:

Range: 0-72 miles

Average: 12.6 miles

Participants were asked: **“On average, how many hours do you work each week?”**

Responses were:

Range: 0-70 hours

Average: 36 hours

Participants were asked: **“Do you, or does anyone in your household, have a home-based business?”** Responses were:

Yes: 7%

No: 93%

Job Training and Small Business Development

Participants were asked: **“Do you feel that you have had sufficient job training?”**

Responses were:

Yes: 73%

No: 28%

Participants were asked: **“What forms of job training would you consider using?”**

Responses included:

Classroom: 71%

Televised course: 46%

Other: 1%

Participants were asked: **“If a class to teach English was offered for free on local TV (cable), do you think you would watch it?”**

Responses were:

Yes: 86%

No: 15%

Participants were asked: **“Would you be interested in small business development courses?”**

Responses were:

Yes: 64%

No: 36%



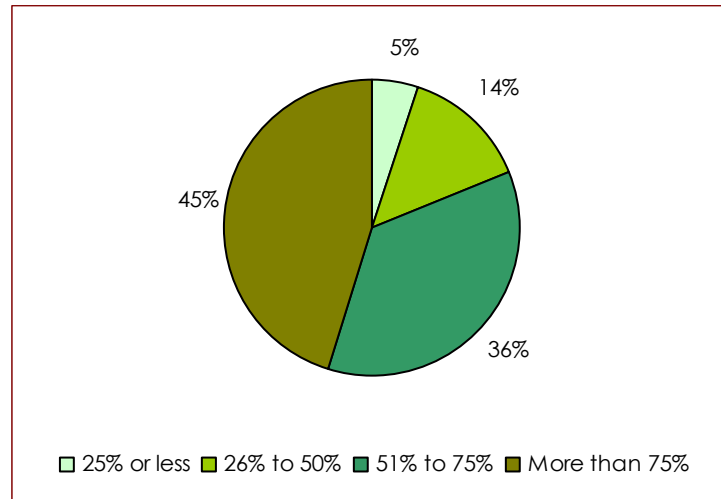
HOUSING & NEIGHBORHOOD SAFETY

Participants were asked about allocation of income to housing costs, effects of increasing housing costs, condition of housing stock, and neighborhood safety.

Housing

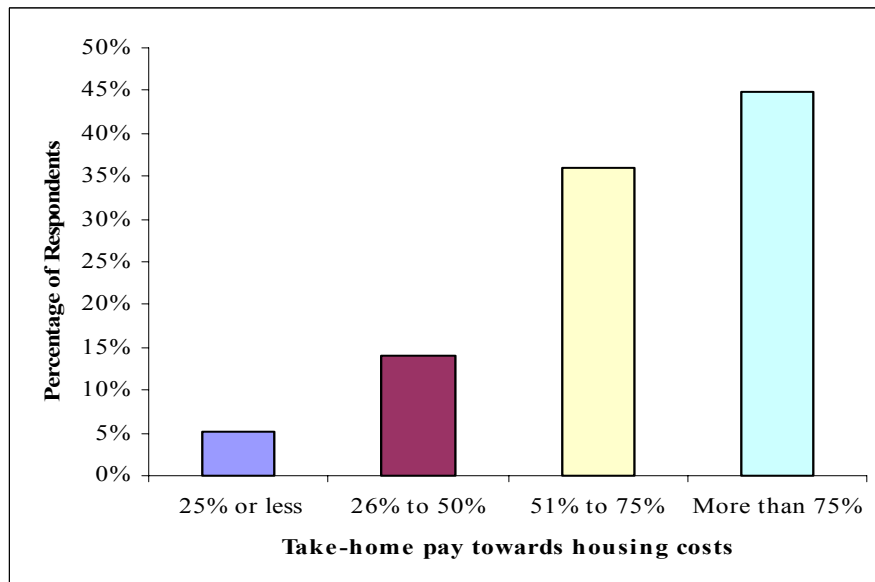
Participants were asked: “What portion of your total household, take-home pay goes to housing costs (rent/mortgage and utilities)?” Almost half (45%) of respondents allocate 75% of their income to cover housing costs.

Figure 44. Portion of income going to housing costs



A higher number of residents in Area 1 (South of Lincoln Ave, North of E. Mission Ave, West of North Ash St and East of North Fig St) allocate more than 75% of their income to housing costs, twice as many people as in Areas 2, 3 and 4.

Figure 45. Portion of income that goes to housing costs



Participants were asked if the cost of housing has caused them to share housing with other families, live temporarily with family or friends, move when they didn't want to, live in an overcrowding unit, live in a housing unit without adequate plumbing, heat, or electricity, or go without other basic needs such as food, clothing, health care, or child care. The responses are mapped on Figure 47.

Figure 46. Effects of Cost of Housing

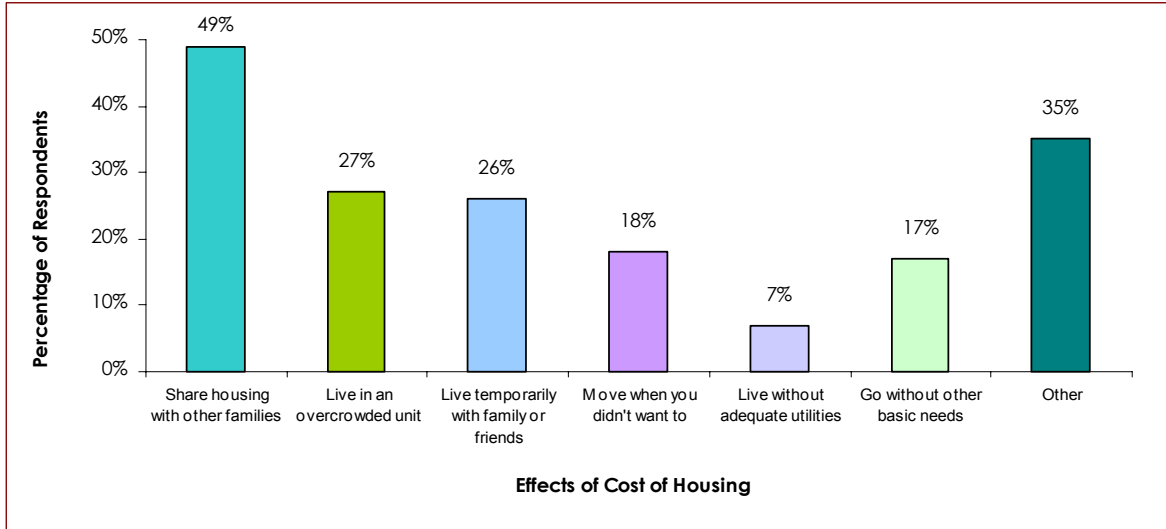
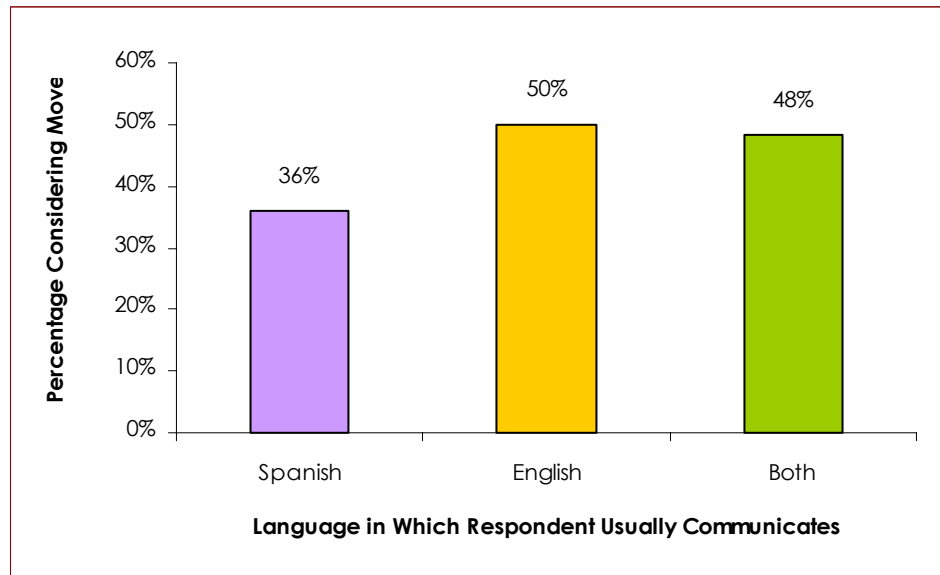


Figure 47. Respondents who have considered moving out of the area by language

Participants were asked:

“Have you seriously considered moving out of the area because of the cost of living?”

Reponses include:
Yes: 41%
No: 59%

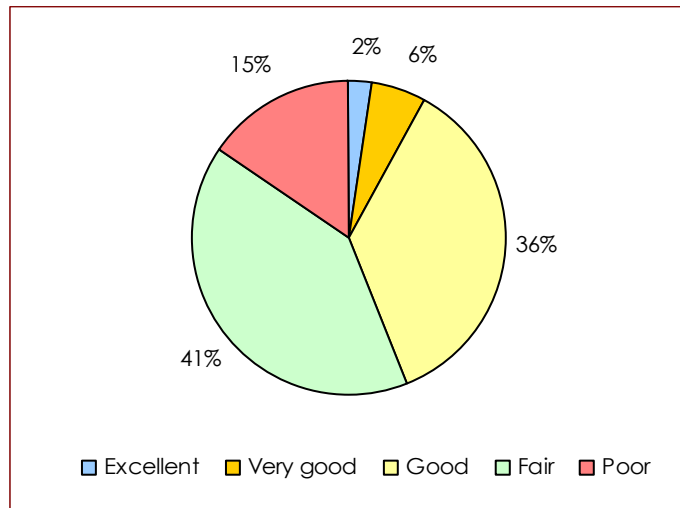


English Speakers reported having considered moving out of the area because of the cost of living at a higher rate than Spanish Speakers. (Figure 48)



Participants were asked: “Overall, how would you describe the condition of the housing in your neighborhood?” Forty-one (41%) percent describe housing stock as fair.

Figure 48. Respondents' Perceptions of Housing Conditions in Mission Park



Neighborhood Safety and Crime

Figure 49. How safe do you feel in your neighborhood?

Participants were asked:
“How safe do you feel in your neighborhood?”

Participants reported:

Very safe: 21%
Somewhat safe: 56%
Not at all safe: 21%
Don't know: 2%

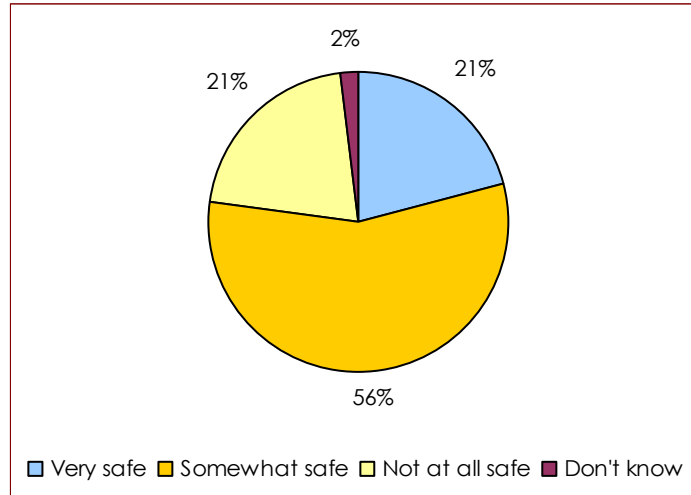
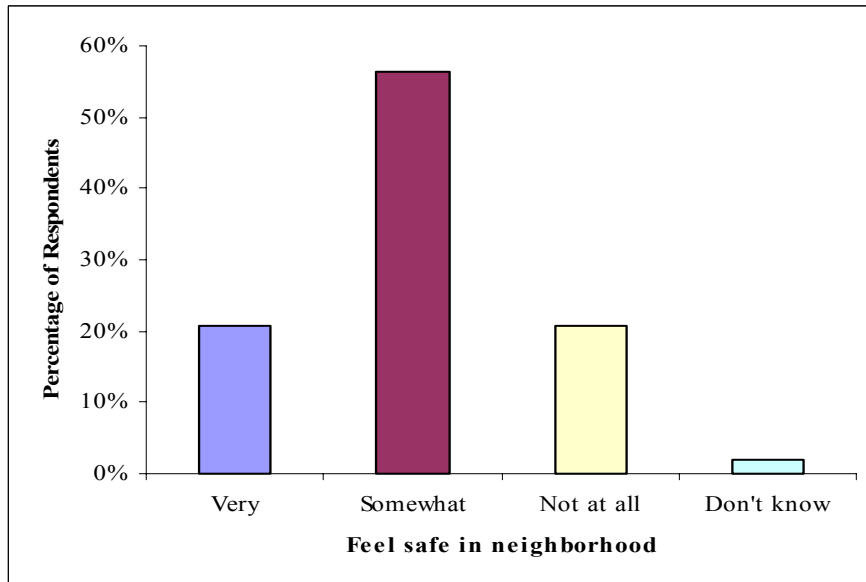


Figure 50. How safe do you feel in your neighborhood? by area



Participants were asked: “How concerned are you about crime in your community?”

Responses indicate that crime is an important concern for community members. **Sixty seven (67%)** of participants reported that they were very concerned about crime in the community, followed by 24% who were somewhat concerned about the issue. (Figure 52)

Figure 51. Respondents Concern About Crime

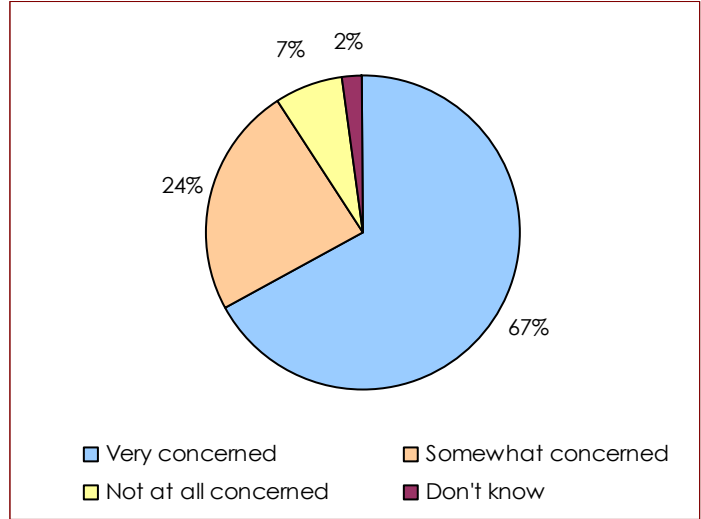
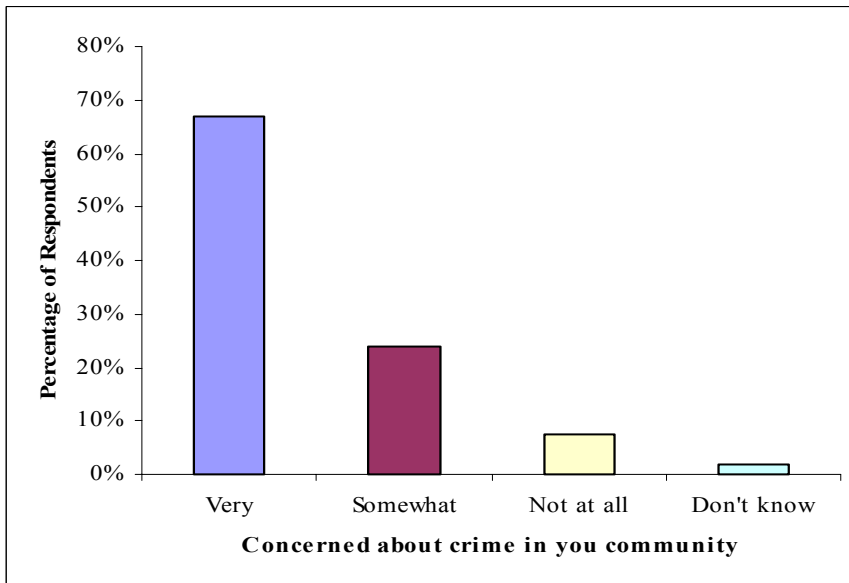


Figure 52. How concerned are you about crime?



Participants were asked: **“Over the past year or two, do you think that the problem of crime in your neighborhood has been getting better or worse?”**

The majority of participants reported that crime is about the same (35%) followed by 34% who felt that the problem was somewhat better; 6% feel that the problem is a lot better; 13% feel that the problem is somewhat worse and 12% stated that the problem was a lot worse.

Figure 53. Crime getting better or worse?

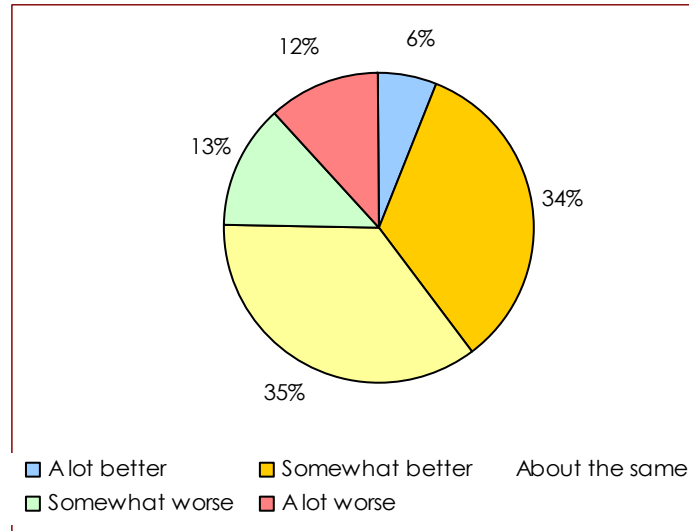
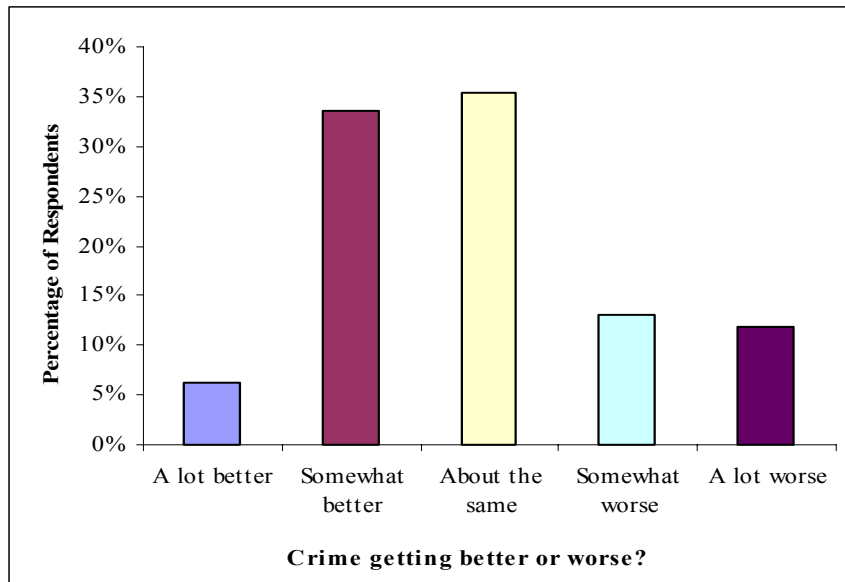


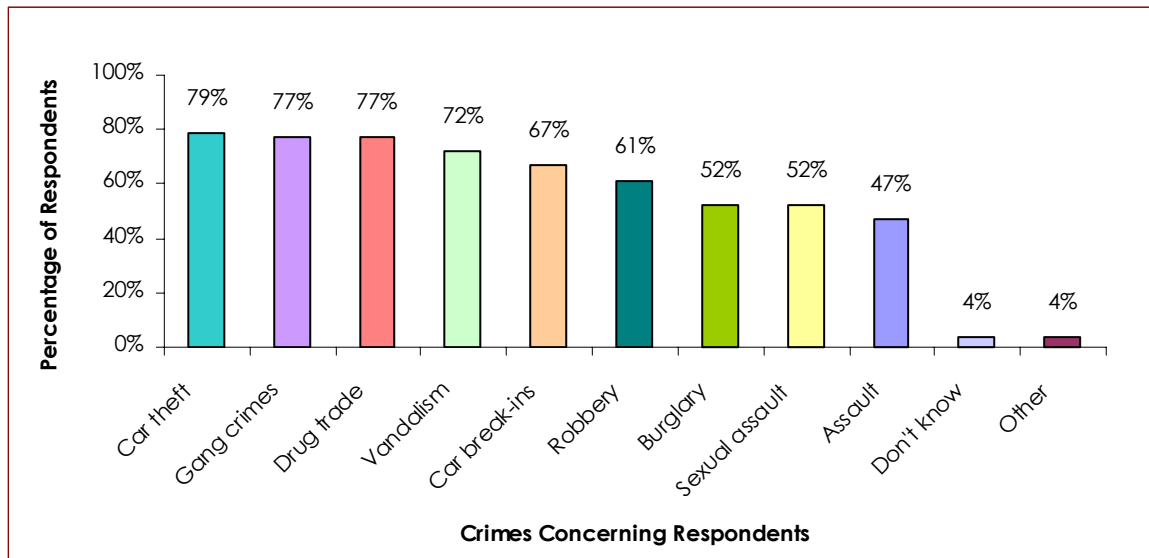
Figure 54: Crime getting better or worse?



Participants were asked: **“What crimes are you most concerned about in your community?”** Responses were:



Figure 55. What crimes concern you?



Car theft, Gang crimes and drugs were cited as the top three crimes of concern in the community followed by vandalism, car break-ins and robbery.



Law Enforcement

Participants were asked: “**How effective do you think law enforcement is in your community?**”

Responses were:

Very effective: 29%
Somewhat effective: 46%
Not at all effective: 17%
Don't know: 2%

Figure 56. How effective is law enforcement in your community?

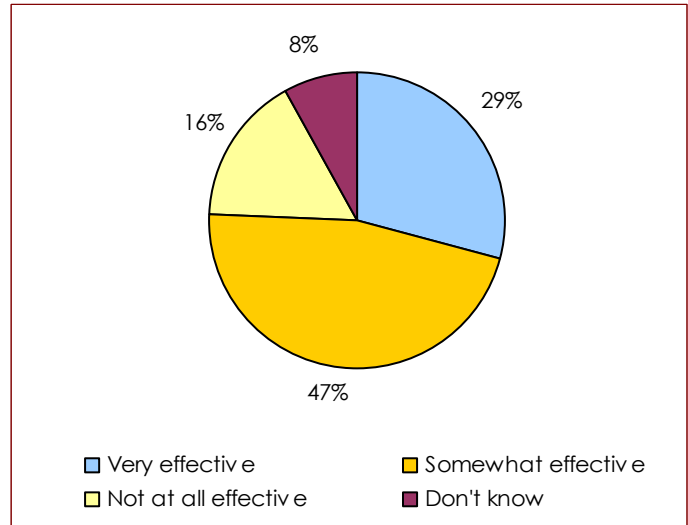
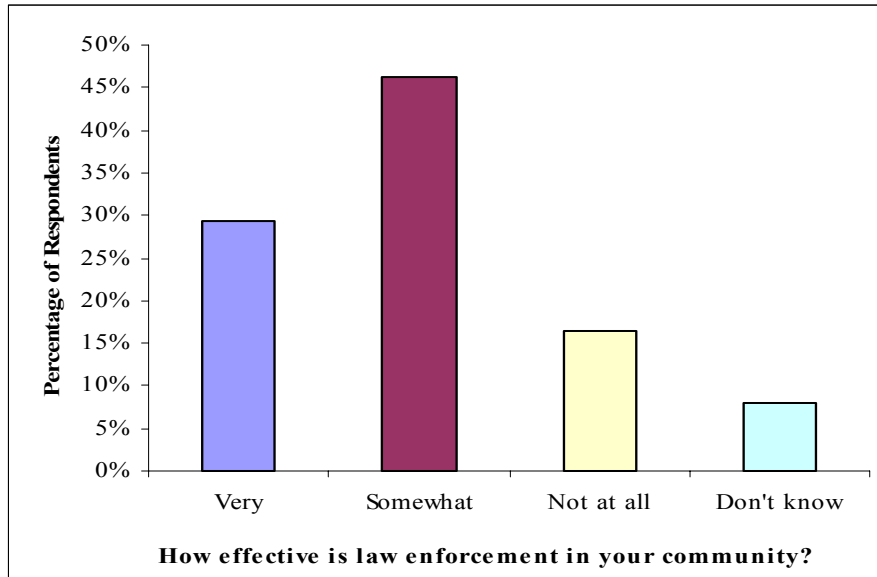


Figure 57. How effective is law enforcement in your community?



SUMMARY OF FINDINGS & RECOMMENDATIONS

Based upon the results of the Mission Park survey, the NLRC recommends the following steps be taken to improve youth activities and education, community resources and social networks, employment and economic development opportunities, and housing and neighborhood safety in Mission Park.

YOUTH ISSUES & ACTIVITIES	
<p>The NLRC recommends that the city of Escondido engage and empower youth and adults to take the leadership roles in improving their social and physical environments and increase quality of life opportunities through training and enrichment activities, peer to peer mentoring, and service learning.</p>	
Findings	Recommendations
<p>Safe Spaces for Youth</p> <p>Sixty (60%) of participants in the survey indicated that children do not have a safe place to play</p>	<p>Identify safe recreational spaces for families with children within Mission Park.</p>
<p>Youth Activities</p> <p>Seventy (70%) of survey participants report having good or fair recreational facilities, activities, and programs for youth in Mission Park, yet half of parents with children indicated limited involvement in recreational activities because “nothing that interests child is available” or “cost of activities.”</p>	<p>Increase awareness about existing City-wide programs and activities.</p> <p>Offer parenting institutes and workshops to share effective tools and techniques to improve student achievement. Implement innovative parent education curriculum including parenting/family education and academic popular education for families.</p> <p>Offer reduced costs for activities and programs with more than one child.</p>



Findings	Recommendations
<p>Parent Involvement in Education</p> <p>The survey indicates that parents are interested in supporting their children's educational success:</p> <ul style="list-style-type: none"> • Parents are involved in the educational process and are actively seeking resources and strategies to create a home environment conducive to student learning and student success and are volunteering in classroom and school activities and attend school events. 	<p>Create educational partnerships with institutions of higher education to provide information promoting college education.</p> <p>Improve communication between parents, students, teachers, and school administrators.</p> <p>Develop parent leadership skills to foster advocacy and self-determination thereby increasing involvement in leadership organizations at school and in the community.</p> <p>Provide a welcoming environment in schools for parents to continue getting involved in their children's school activities by maintaining open communication between home and school.</p>
<p>Educational Resources</p> <p>Ninety-two percent of survey respondents with children report interest in using a resource center at least weekly.</p>	<p>Design a culturally and linguistically appropriate parent/family resource center accessible to Mission Park residents to serve as a hub for family education.</p> <p>Increase access to reading materials and educational resources to assist parents to create a home environment that supports learning.</p>



COMMUNITY RESOURCES & SOCIAL NETWORKS

The NLRC recommends that the City of Escondido create a plan that is inclusive of Mission park residents that works to improve awareness of and access to city-wide programs and activities. The city should work to restructure services and interventions so that they are able to be more closely integrated into community networks.

Findings	Recommendations
<p>Connection to Community</p> <p>An overwhelming amount of residents stated that they did not feel connected to their community. Only 14% stated that they felt very connected to their community.</p>	<p>Foster the development of organized neighborhood groups and associations through grassroots community organizing to increase civic engagement and sense of "connection" in Mission Park.</p> <p>Provide services that overcome language and cultural barriers.</p> <p>Coordinate isolated efforts to increase access to community resources by working with agencies and service providers.</p> <p>Build on organizational capacity and infrastructure of providers in Mission Park to promote a comprehensive service-delivery model</p> <p>Promote education and trainings for Mission Park residents as means to spread awareness regarding City-sponsored programs and services.</p> <p>Identify best practices in City-Community collaboration to foster productive civic engagement.</p> <p>Increase sustainability of programs and interventions in Mission Park. Participants repeatedly expressed their frustration in seeking access to programs that are short-lived.</p> <p>Build on informal social and familial networks as a community asset. Informal social networks create a strong sense of camaraderie and cooperation. Due to limited resources participants cite that they rely on their family and friends on a daily basis.</p> <p>Address barriers to access such as legal status, lack of insurance, and poverty. Due to the high mobility of the neighborhood's population, providing a continuum of care and collecting information is very difficult but important.</p> <p>Evaluate current programs and resources to assess effectiveness.</p>
<p>The majority of participants stated that someone in their immediate family lack health insurance.</p>	<p>Access to health care in Mission Park should be a priority for the health and social service agencies working within the community. Agencies must recognize the important role that cost and immigration status plays in access to health care for residents.</p>



EMPLOYMENT & ECONOMIC DEVELOPMENT

The NLRC recommends that the City of Escondido develop an economic development strategy specifically addressing the employment, business development, and capacity development and trainings of Mission Park residents.

Findings	Recommendations
<p>While the majority of Mission Park residents feel that not enough employment opportunities exist in Escondido, many feel that there is great potential to initiate economic development strategies.</p>	<p>Create a long-term investment plan in Mission Park to identify resources and build on local capacity.</p> <p>Develop data tracking mechanisms to monitor quality of life indicators.</p> <p>Evaluate current employment trends and identify opportunities for economic development.</p> <p>Develop partnerships in philanthropy to ensure equitable, sustainable, and long-term programs.</p> <p>Support capacity building and training designed to inform residents about economic and small business development programs for residents.</p> <p>Design targeted and culturally appropriate community outreach campaigns to inform residents of current and new opportunities.</p>
<p>Language barriers was the number one reason why residents feel that they do not have work opportunities in the area.</p>	<p>Provide English classes for residents interested in receiving them.</p>
<p>Over one fourth of participants stated that they went without basic needs such as childcare, healthcare, food, or clothing within the last year.</p>	<p>Provide targeted outreach to community residents informing them of local resources and humanitarian services and facilitate availability and accessibility to address basic needs.</p>



HOUSING & NEIGHBORHOOD SAFETY

The NLRC recommends that the City of Escondido work in implementing culturally and linguistically appropriate strategies aimed at improving housing and neighborhood safety within Mission Park.

Findings	Recommendations
Forty five percent of residents state that more than 75 % of their income to cover housing costs	Increase access to affordable housing for low-income residents by designing strategies that take into account housing costs in the city.
The cost of Housing pushes families to share housing with other families and into overcrowded living situations	Increase access to affordable housing for low-income residents by designing strategies that take into account housing costs in the city.
Forty one percent described the condition of the local housing stock as "Fair"	Facilitate collaboration between residents, code enforcement, and local agencies working on housing issues. Introduce healthy housing models to Mission Park to work with residents on improving housing facilities.
The majority of participants stated that they feel "somewhat" safe in their neighborhood. Sixty seven percent of participants reported being very concerned about crime in their community	Identify strategies to secure more affordable housing in Mission Park. Enhance safety by developing partnerships with law enforcement to ensure productive community-law enforcement relations to address safety issues and concerns. Facilitate community networks and engagement aimed at improving neighborhood safety. Form a community-law enforcement citizen committee to help develop strategies to work with Mission Park residents to address safety concerns.
46% of participants felt that law enforcement is somewhat effective in their community	Law enforcement should begin a public image campaign and work with the community in building an environment of collaboration between law enforcement and community residents in Mission Park.



LIST OF ATTACHMENTS

Mission Park Community Survey, Escondido, California

Encuesta para la Comunidad de Mission Park, Escondido, California
Protocol

City of Escondido Summary of Resources



CITY OF ESCONDIDO SUMMARY OF SERVICES

PROGRAMS AVAILABLE THROUGH OR IN THE CITY OF ESCONDIDO Compiled by Jamie Kasvikis

YOUTH ISSUES AND ACTIVITIES		
SUBJECT	AGENCY	PHONE NUMBER
City of Escondido After School Programs (at various elementary schools)	Community Services – Recreation 201 N. Broadway	839-4691 / 839-4382
Art Activities	California Center for the Arts	839-4138
City of Escondido Recreation programs: Art classes Baseball information (Little League) Basketball information Soccer league Information Softball information Parks and picnic facilities Scholarships (Share a Dream Program) Programs for teens Tennis Information (Public tennis courts) Track and field programs Many more classes ...	Community Services – Recreation 201 N. Broadway	839-4691
Arts Off Broadway Children's Musical Theater	129 E. Grand Ave.	735-3302
Boys' & Girls' Club, 115 W. Woodward Ave.	Boys' & Girls' Club of Greater San Diego	746-3315
Boys' & Girls' Club After School Program at Middle Schools (X-Track)	Various middle schools	746-3315
Child Care Referrals	YMCA Childcare Resource Service	800-481-2151
Child Care Subsidy – Escondido	City of Escondido (Palomar Family Counseling)	741-2660
Child Development Center (Child Care) 819 W. 9th Ave., 613 Lincoln Ave	Escondido Community Child Dev. Center Admin. Office (Betsy Jones) 839-9361	745-9215
Youth Programs and Community Service Opportunities	Escondido Education Compact	839-4515
Escondido Children's Museum www.escondidochildrensmuseum.org	340 N. Escondido Blvd., CCAE Studio #1	233-7755
Escondido Sports Center (Arena Soccer, Skate Park, Hockey programs) 3315 Bear Valley Parkway	Community Services – Recreation 201 N. Broadway	839-5425



YOUTH ISSUES AND ACTIVITIES		
SUBJECT	AGENCY	PHONE NUMBER
Explorer Program – Fire	Fire Department, 201 N. Broadway	839-5400
Explorer Program – Police	Police Department – Rick Bass/ Jon Berlinguette 700 W. Grand	839-4770
Family Counseling & Assessment Program (for students & their families attending Pioneer, Rose, Grant, Lincoln, Farr Schools)	City of Escondido (Palomar Family Counseling)	741-2660
Health Families Insurance – Uninsured Children	Neighborhood Healthcare, 425 S. Date St.	737-2030
Main Library – Children's Section	Main Library, 239 S. Kalmia	839-4837
Main Library – Circulation	Main Library, 239 S. Kalmia	839-4684
Main Library – Computer Center	Main Library, 239 S. Kalmia	839-4280
Branch Library – East Valley Branch	Branch Library, 2245 E. Valley Parkway	839-4394
Main Library – Literacy Services	Main Library, 239 S. Kalmia	747-2233
Main Library – Teen Hot Spot	Main Library, 239 S. Kalmia	839-6210
Megan's Law – Information on registered sex offenders (http://www.meganslaw.ca.gov/)	Police	839-4430
Pools – James A. Stone Pool 130 Woodward Avenue	Community Services – Recreation 201 N. Broadway	839-4691
Pools – Washington Park Pool 501 North Rose Street	Community Services – Recreation 201 N. Broadway	839-4691
City of Escondido Recreation – Activity Hotline	Community Services – Recreation 201 N. Broadway	839-4538
Reidy Creek Golf Course 2300 N. Broadway	JC Resorts	740-2450
Tiny Tots pre-school program	Community Services – Recreation 201 N. Broadway	839-4382/4691
Vineyard Golf Course – 925 San Pasqual Rd.	American Golf Corporation	735-9545
YMCA	Palomar Family YMCA 1050 N. Broadway, Escondido 92025	745-7490
YMCA After School Programs at various elementary schools	Various elementary schools	745-7490



COMMUNITY RESOURCES AND SOCIAL NETWORKS		
SUBJECT	AGENCY	PHONE NUMBER
AIDS/HIV Care	Fraternity House 20702 Elfin Forest Rd.	736-0292
Domestic Violence Shelter/Services	Center for Community Solutions St. Clare's Homes, Inc.	741-0122
Escondido Community Gardens information	Neighborhood Services	839-4579
Fraternity House (care/services for those living with AIDS/HIV)	Fraternity House, 20702 Elfin Forest Rd.	736-0292
Neighborhood Healthcare (formerly Escondido Community Health Clinic)	Neighborhood Healthcare 425 Date Street	737-2030
Fellowship Center (Shelter/support for men recovering from addictions)	735 E. Grand Ave	745-0874
Food Stamps	County of San Diego (Escondido office)	741-4391
FREE Tax Filing Services (EITC)	Interfaith Community Services	489-6380
Graffiti Removal	Public Works – Maintenance	839-4668
Homeless Shelters	Interfaith Community Services	489-6380
Immigration & Naturalization	U.S. Government	800-375-5283
Meals on Wheels (nutritious meals delivered to homebound seniors)	Meals on Wheels of Greater San Diego	619-260-6110
Medi-Cal – General Information	County – Health	858-514-6885
Medicare	U.S. Government	800-633-4227
Medicare Card	County – Social Services Office	741-4391
Minor Home Repair Program – Seniors	Lutheran Social Services (at Joslyn Senior Center)	
Neighborhood Improvements	City of Escondido Neighborhood Services Division	839-4579
Neighborhood Organizations	City of Escondido Neighborhood Services Division	839-4579
Neighborhood Watch	Police – COPPS Unit	839-4955
North County Serenity House (shelter/support for women recovering from addictions)	1341 N. Escondido Blvd	747-1015
Mental Health Systems, Inc. (mental health services, drug testing, parenting info)	620 N. Ash Street	741-7708
Hospital -- Palomar Medical Center	555 E. Valley Pkwy., Escondido 92025	739-3000
Out & About Senior Transportation Program	Redwood Elderlink	291-2710
Poison Information	County	800-876-4766



COMMUNITY RESOURCES AND SOCIAL NETWORKS		
SUBJECT	AGENCY	PHONE NUMBER
Joslyn Senior Center -- Project Car	Joslyn Senior Center	839-4896
St. Clare's Home (Domestic Violence Assistance for women/children)	St. Clare's Home 2091 E. Valley Pkwy	741-0122
Senior Services and activities	Joslyn Senior Center	839-4688
Senior Nutrition Program – Nutrition Office (low-cost daily meal for seniors)	Joslyn Senior Center	839-4803
Tax Preparation for Seniors – Senior Citizens	Sr. Service Council	480-0611
Veterans –VA Clinic (Escondido) 815 E. Pennsylvania Ave.	U.S. Government	745-2000
Veterans – New Resolve (shelter/support for homeless veterans)	1207 S. Escondido Blvd.	745-7829
Veterans Affairs – U.S.	U.S. Government	800-827-1000

EMPLOYMENT AND ECONOMIC DEVELOPMENT		
SUBJECT	AGENCY	PHONE NUMBER
Adult Literacy Services	Library	747-2233
Business Licenses	City of Escondido Business License Division	839-4659
Center for Employment Training (CET)	1151 E. Washington Ave.	747-9115
Employment Development Dept. (EDD) – State	State of California – Employment Development Dept. 1949 Avenida del Oro, Suite 106, Oceanside, CA	Jobseekers: 760 631-6150
Employment Development Dept. (EDD) – State Unemployment	State of California	English: 1-800-300- 5616 Spanish: 1-800-326- 8937
Employment Information – Jobs at City of Escondido	Human Resources	839-4643
English as a Second Language Classes (at Grant Middle School)	City of Escondido (Palomar Workforce & Community Development)	744-1150 x. 2826
Escondido Adult School 3750 Mary Lane	Escondido Union High School District	739-7300
FREE Tax Filing Services (EITC)	Interfaith Community Services	489-6380
Federal Taxes	Internal Revenue Service	800-829-3676
State Taxes (Franchise Tax Board)	State of California	800-852-5711
Grants – Small Businesses	City of Escondido Economic Development Division	839-4000
Inland North County Career Center	Inland North County Career Center	738-0274



EMPLOYMENT AND ECONOMIC DEVELOPMENT		
SUBJECT	AGENCY	PHONE NUMBER
Internal Revenue Service – Federal Tax Questions	U.S. Government	800-829-1040
Internal Revenue Service – Forms www.irs.gov	U.S. Government	800-829-3676
Job Line – City of Escondido	Human Resources	839-4585
Labor Relations/Standards Enforcement	State – Industrial Relations Department	800-963-9424
Licensing – Family Day Care	County	619-767-2200
Regional Occupation Program (ROP)	Escondido Adult School	739-7309
SER/Jobs for Progress		
Small Business Administration	550 West C Street, Suite 550, San Diego	(619) 557-7250
Small Business Development Center (North County)	1823 Mission Avenue, Oceanside	795-8740

HOUSING AND NEIGHBORHOOD SAFETY		
SUBJECT	AGENCY	PHONE NUMBER
Affordable Housing opportunities	Housing Division	839-4841
Amber Alert – Abductions of minors	Police	839-4922
Ambulance		911
Battered Women (domestic violence)	St. Clare's Home	741-0122
Child Abuse	Police	839-4717
Child Car Seat or Safety Seat Check Apptmt	Police	839-4707
Child Protective Services	County – Placement	754-3456
Child Protective Services Hotline	County – Child Protective Services	800-344-6000
Child Support (North County)	County – District Attorney	760-806-4004
Code Enforcement (complaints, code violations,	Code Enforcement	839-4650
Community Gardens information	Neighborhood Services	839-4579
County Health – Food & Housing Complaints	County – Health	619-338-2283
County Health & Human Services Family Resource Center	County – Health & Human Services 620 E. Valley Pkwy., Escondido	741-4391
County Health Dept. Public Health Center – Medical, Immunizations, Pregnancy	County – Health Department 606 E. Valley Pkwy. Escondido, CA 92025	740-4000
County Vector Control (rats, bats, varmints)	County	858-694-2888
Crossing Guard at Schools	Police – Kathleen Navarro	839-4707
Elder Abuse	County – Aging & Independent Services	800-510-2020



HOUSING AND NEIGHBORHOOD SAFETY		
SUBJECT	AGENCY	PHONE NUMBER
Rent, Eviction, Landlord-Tenant Issues, Fair Housing rights	Heartland Human Relations	760-877-0277 Spanish 800-954-0441 English
City of Escondido First-Time Homebuyer Program	City Housing Division	839-4532
Gangs	Police – Special Investigations Unit	839-4954
Grocery Cart Removal	Grocery Cart Recovery	800-252-4613
Housing – Emergency Rental Assistance and Area Shelters	Catholic Charities Community HousingWorks Interfaith Community Services St. Clare's Homes	619-231-2828 432-6878 489-6380 741-0122
Housing – Fair Housing	Heartland Human Relations Association California Dept. of Fair Employment and Housing U.S. Dept. of Housing and Urban Development (housing discrimination hotline)	760-877-0277 Spanish 800-954-0441 English 800-884-1684 800-669-9777
Housing – Section 8 Rental Assistance	County of San Diego Section 8 Program	741-5922 (voicemail only) or 760-741-5922
Rehabilitation Loans (City of Escondido)	City Housing Division	839-4852
Legal Aid Society	Legal Aid Society	724-2740
Rental Subsidy for Senior Citizens (City of Escondido)	City Housing Division	839-4356
Street Lights – New	Engineering – Traffic	839-4595
Street Lights – Repair	Public Works – Maintenance	839-4668
Traffic Control Requests – Crosswalks, Signals, and Signs	Engineering – Traffic	839-4595



REFERENCES & RESOURCES

- Automated Regional Justice Information System (ARJIS). (<http://www.arjis.org/>)
California Department of Education. (<http://www.cde.ca.gov/ds/>)
City of Escondido. Five-Year Consolidated Plan FY 2005 Through FY 2010. Escondido, California, May 2005.
- City of Escondido. Mission Park Baseline Data Collection-Community Economic and Health Indicators (PowerPoint Presentation).
- Eisenstadt, T.A. & Thorup, C. L. (1994). Caring Capacity versus Carrying Capacity: Community responses to Mexican immigration in San Diego's North County. La Jolla, CA: Center for U.S.-Mexican Studies, University of California San Diego.
- Gallavan, N., & Knowles- Yáñez, K. (2004). Co-mingling geographic content with social studies methods, *Journal of Geography*. 103, 64-75.
- Hart, R. (1999). *Children's Participation: The Theory and Practice of Involving Young Citizens in Community Development and Environmental Care*. UNICEF, New York.
- Knowles-Yáñez, K. (2004). Approaches to children's participation in land use planning processes. *Journal of Planning Literature*. Manuscript accepted for publication.
- Knowles-Yáñez, K. (2003). Book Review of *Growing Up in an Urbanizing World*, (Ed. Louise Chawla) and its companion volume, *Creating Better Cities with Children and Youth: A Manual for Participation* by David Driskell (both 2002 UNESCO) for *Local Environment*, 8:3, pp. 352-354.
- Knowles-Yáñez, K. (2002). The United Nations Convention on the rights of the child as a framework for the participation of children and youth in community land use planning processes. *Planner's Network Magazine*, Winter, pp. 13-14.
- Knowles-Yáñez, K. (2000). Book Review of *Cities and children: Children's rights, poverty and urban management* by Sheridan Bartlett et al. (1999 Earthscan Publications) for *Local Environment*, 5, 364-365.
- Knowles-Yáñez, K., Leininger, S., Lubeley, L., & Ragazzi, K. (2003). Using geographic information systems (GIS) to create an exhibit for the Escondido (CA) children's museum: "Your community," *Proceedings of the 2003 Environmental Systems Research Institute (ESRI) Education Users Conference*.
- Kretzmann, J.P. and McKnight, J. (1993) *Building Communities from the Inside out: A Path Toward Finding and Mobilizing a Community's Assets*. Chicago, IL. ACTA Publications.
- McIntyre, N.E., Knowles-Yáñez, K., & Hope, D. (2000). Urban ecology as an interdisciplinary field: Differences in the use of 'urban' between the social and natural sciences. *Urban Ecosystems*, 4, 5-24.
- Prickett, C.O. (2002). *And College for All*. California State University, San Marcos, CA.



Putman, R.D. (2000). *Bowling Alone: The collapse and revival of American community*. New York, NY. Simon & Schuster

SANDAG Data Warehouse Census Tracts 202.02 and 202.12. (<http://www.sandag.org>)

San Diego County Health and Human Services Agency Child and Family Health & Well-Being Report Card, 2001

UNICEF (United Nation's Children's Fund). (2004). *Children as Community Researchers*. <http://www.unicef.org/teachers/researchers/intro.htm>.

World Bank (1999). <http://www.worldbank.org/poverty/scapital/whatsc.htm>

Yáñez-Chávez, A., Ghiara, R., Knowles-Yáñez, K, & Zwick, P. (2000). *Building regionalism in San Diego's North County: A report for the San Diego Dialogue*.

